

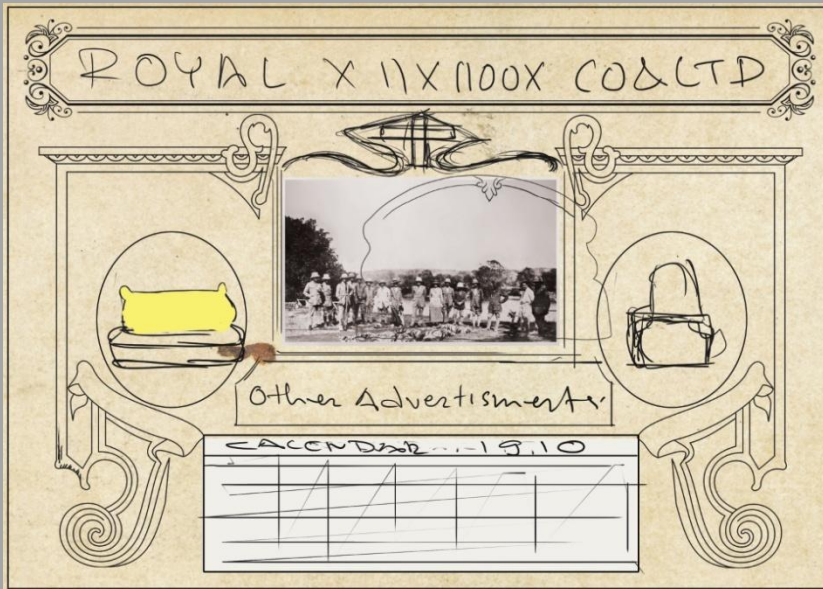
## THE CALENDAR PROJECT

Following are 56 digital prints of date calendars for the years of the 20<sup>th</sup> century, made by multiple contemporary artists. The works were conceived and produced during the project period – 2009-2012. Hence the works are original and contemporary. But they pretend to be copy by dating themselves to the previous century. So this entire endeavour can be called *fake copy of imaginary original or copy without the original*.

The works are completely autonomous and conceived by the individual artists in negotiation with the Cinema City publication **dates.sites**. But when collated together they become inter-dependent and evolve as an anthology of histories of public art. While the artists brought in contemporary sensibilities, tools and technologies to make a re-presentation of the public culture in the previous century, the visual material that they use are mostly found images or quotes from iconic paintings / prints / stills (Raj Kapoor-Nargis, Raja Ravi Varma's oleographs, Nandalal Bose's Gandhi, Kagaz ke Phool, Malegaon ka Superman, Bachchan for Bombay lungi, Kashmir for evening news, Bharatmata for life insurance etc.).

In this endeavor we had also aimed to puncture the logic of value assessment in visual art world. Would these works be more valuable if they were certified as vintage or if they were considered as contemporary original? In order to make it even more complicated the contributors in this project, ranging from eminent artists to undergraduate students, largely remain anonymous. A few works were printed in copies and made publicly available at nominal price. Hopefully, in years to come, some of these works would surface back in the side lanes of Chor Bazar. By conceiving The Calendar Project venture Cinema City had taken the buzzing market of contrived memorabilia and hyped nostalgia by the horn.

You may download the calendars – they are free from copyright but we request the user to give credit wherever applicable.



1908  
Incredible India  
by Sachin Kondhalkar

For God so loved the world, that he gave his only begotten Son, that whosoever believeth in him should not perish, but have everlasting life

पवित्र बाइबल

பவிர்த் பைபிள்

ಹದಿನೆಂತ್ಯ ಬೈಬಲ್

পবিত্র বাইবেল

JANUARY

M	T	W	T	F	S
2	3	4	5	6	7
9	10	11	12	13	14
16	17	18	19	20	21
23	24	25	26	27	28
30	31				

FEBRUARY

M	T	W	T	F	S
1	2	3	4		
6	7	8	9	10	11
13	14	15	16	17	18
20	21	22	23	24	25
27	28				

THE HOLY BIBLE, containing the Old Testament and the New

JULY

M	T	W	T	F	S
1					
3	4	5	6	7	8
10	11	12	13	14	15
17	18	19	20	21	22
24	25	26	27	28	29
31					

AUGUST

M	T	W	T	F	S
1	2	3	4	5	
7	8	9	10	11	12
14	15	16	17	18	19
21	22	23	24	25	26
28	29	30	31		

MARCH

M	T	W	T	F	S
1	2	3	4		
6	7	8	9	10	11
13	14	15	16	17	18
20	21	22	23	24	25
27	28	29	30	31	

APRIL

M	T	W	T	F	S
1					
3	4	5	6	7	8
10	11	12	13	14	15
17	18	19	20	21	22
24	25	26	27	28	29

SEPTEMBER

M	T	W	T	F	S
1	2	3	4	5	6
8	9	10	11	12	13
15	16	17	18	19	20
22	23	24	25	26	27
29	30				

OCTOBER

M	T	W	T	F	S
1	2	3	4	5	6
8	9	10	11	12	13
15	16	17	18	19	20
22	23	24	25	26	27
29	30	31			

MAY

M	T	W	T	F	S
1	2	3	4	5	6
8	9	10	11	12	13
15	16	17	18	19	20
22	23	24	25	26	27
29	30	31			

JUNE

M	T	W	T	F	S
1	2	3	4		
6	7	8	9	10	11
13	14	15	16	17	18
19	20	21	22	23	24
26	27	28	29	30	

NOVEMBER

M	T	W	T	F	S
1	2	3	4		
6	7	8	9	10	11
13	14	15	16	17	18
20	21	22	23	24	25
27	28	29	30		

DECEMBER

M	T	W	T	F	S
1	2	3	4	5	6
8	9	10	11	12	13
15	16	17	18	19	20
22	23	24	25	26	27
29	30	31			

All India Bible Society  
SEWREE  
Every Sunday 11 am Moving Images Show

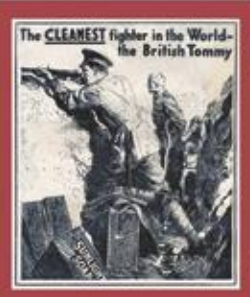
1911  
Indian Christianity  
by Amit Roy

# SUNLIGHT SOAP.

1920

1920

JANUARY	FEBRUARY
S M T W T F S	S M T W T F S
1 2 3	1 2 3 4 5 6 7
4 5 6 7 8 9 10	8 9 10 11 12 13 14
11 12 13 14 15 16 17	15 16 17 18 19 20 21
18 19 20 21 22 23 24	22 23 24 25 26 27 28
25 26 27 28 29 30 31	29



MARCH	APRIL
S M T W T F S	S M T W T F S
1 2 3 4 5 6	1 2 3
7 8 9 10 11 12 13	4 5 6 7 8 9 10
14 15 16 17 18 19 20	11 12 13 14 15 16 17
21 22 23 24 25 26 27	18 19 20 21 22 23 24
28 29 30 31	25 26 27 28 29 30

The clean, chivalrous fighting instincts of our gallant soldiers reflect the ideals of our business life. The same characteristics which stamp the British Tommy as the CLEANEST FIGHTER IN THE WORLD have won equal repute for British Goods.

SUNLIGHT SOAP is typically British. It is acknowledged by experts to represent the highest standard of Soap Quality and Efficiency. Tommy welcomes it in the trenches just as you welcome it at home.

**NO RUBBING! NO BOILING!**

MAY	JUNE
S M T W T F S	S M T W T F S
1	1 2 3 4 5
2 3 4 5 6 7 8	6 7 8 9 10 11 12
9 10 11 12 13 14 15	13 14 15 16 17 18 19
16 17 18 19 20 21 22	20 21 22 23 24 25 26
23 24 25 26 27 28 29	27 28 29 30
30 31	



JULY	AUGUST
S M T W T F S	S M T W T F S
1 2 3	1 2 3 4 5 6 7
4 5 6 7 8 9 10	8 9 10 11 12 13 14
11 12 13 14 15 16 17	15 16 17 18 19 20 21
18 19 20 21 22 23 24	22 23 24 25 26 27 28
25 26 27 28 29 30 31	29 30 31

SUNLIGHT SOAP  
THE SEAL OF HEALTH



**WASHES EASILY! QUICKLY! CLEANLY!**

SUNLIGHT SOAP  
THE SEAL OF CONFIDENCE



SEPTEMBER	OCTOBER
S M T W T F S	S M T W T F S
1 2 3 4	1 2
5 6 7 8 9 10 11	3 4 5 6 7 8 9
12 13 14 15 16 17 18	10 11 12 13 14 15 16
19 20 21 22 23 24 25	17 18 19 20 21 22 23
26 27 28 29 30	24 25 26 27 28 29 30
	31



NOVEMBER	DECEMBER
S M T W T F S	S M T W T F S
1 2 3 4 5 6	1 2 3 4
7 8 9 10 11 12 13	5 6 7 8 9 10 11
14 15 16 17 18 19 20	12 13 14 15 16 17 18
21 22 23 24 25 26 27	19 20 21 22 23 24 25
28 29 30	26 27 28 29 30 31

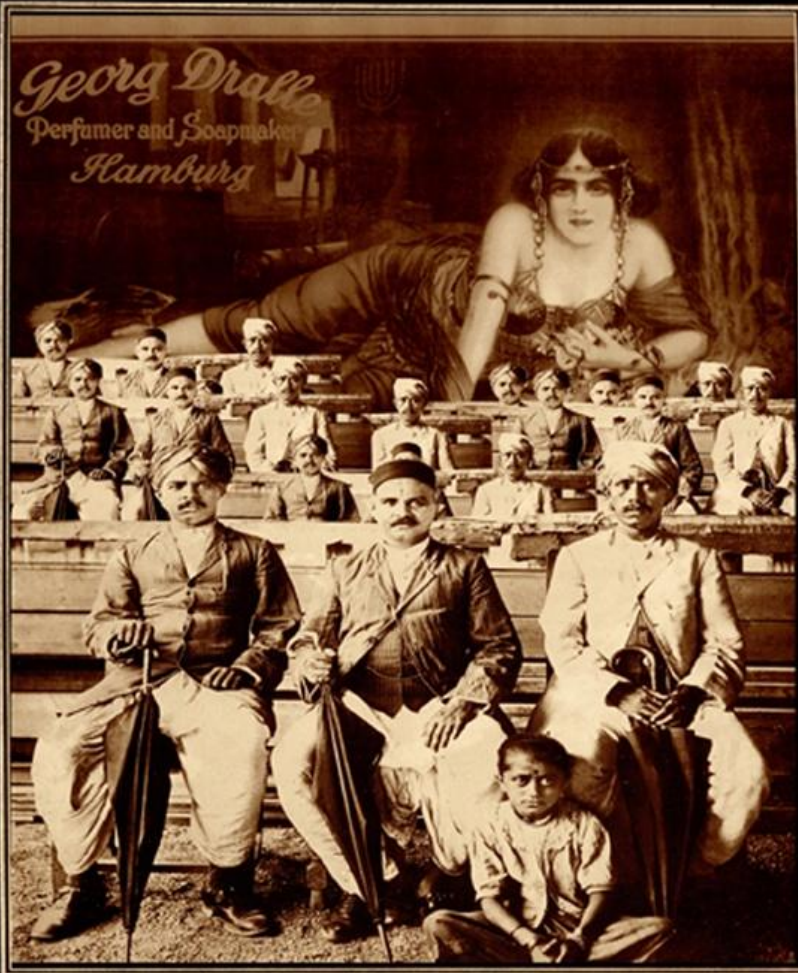


India's most popular soap for all purposes



LEVER BROTHERS LIMITED  
PORT SUNLIGHT

1920  
Clean Army  
by Amit Roy



**1923**

JANUARY	MAY	SEPTEMBER
... 7 14 21 28 ...	... 6 13 20 27 ...	... 2 9 16 23 30
1 8 15 22 29 ...	... 7 14 21 28 ...	... 3 10 17 24 ...
2 9 16 23 30 ...	1 8 15 22 29 ...	... 4 11 18 25 ...
3 10 17 24 31 ...	2 9 16 23 30 ...	... 5 12 19 26 ...
4 11 18 25 ...	3 10 17 24 31 ...	... 6 13 20 27 ...
5 12 19 26 ...	4 11 18 25 ...	... 7 14 21 28 ...
6 13 20 27 ...	5 12 19 26 ...	1 8 15 22 29 ...
FEBRUARY	JUNE	OCTOBER
... 4 11 18 25 ...	... 3 10 17 24 ...	... 7 14 21 28 ...
... 5 12 19 26 ...	... 4 11 18 25 ...	1 8 15 22 29 ...
... 6 13 20 27 ...	... 5 12 19 26 ...	2 9 16 23 30 ...
... 7 14 21 28 ...	... 6 13 20 27 ...	3 10 17 24 31 ...
1 8 15 22 ...	... 7 14 21 28 ...	4 11 18 25 ...
2 9 16 23 ...	1 8 15 22 29 ...	5 12 19 26 ...
3 10 17 24 ...	2 9 16 23 30 ...	6 13 20 27 ...
MARCH	JULY	NOVEMBER
... 4 11 18 25 ...	1 8 15 22 29 ...	... 4 11 18 25 ...
... 5 12 19 26 ...	2 9 16 23 30 ...	... 5 12 19 26 ...
... 6 13 20 27 ...	3 10 17 24 31 ...	... 6 13 20 27 ...
... 7 14 21 28 ...	4 11 18 25 ...	... 7 14 21 28 ...
1 8 15 22 29 ...	5 12 19 26 ...	1 8 15 22 29 ...
2 9 16 23 30 ...	6 13 20 27 ...	2 9 16 23 30 ...
3 10 17 24 31 ...	7 14 21 28 ...	3 10 17 24 ...
APRIL	AUGUST	DECEMBER
1 8 15 22 29 ...	... 5 12 19 26 ...	... 2 9 16 23 30
2 9 16 23 30 ...	... 6 13 20 27 ...	... 3 10 17 24 31
3 10 17 24 ...	... 7 14 21 28 ...	... 4 11 18 25 ...
4 11 18 25 ...	1 8 15 22 29 ...	... 5 12 19 26 ...
5 12 19 26 ...	2 9 16 23 30 ...	... 6 13 20 27 ...
6 13 20 27 ...	3 10 17 24 31 ...	... 7 14 21 28 ...
7 14 21 28 ...	4 11 18 25 ...	1 8 15 22 29 ...



1923  
Row of Men  
by Deepshikha Jaiswal



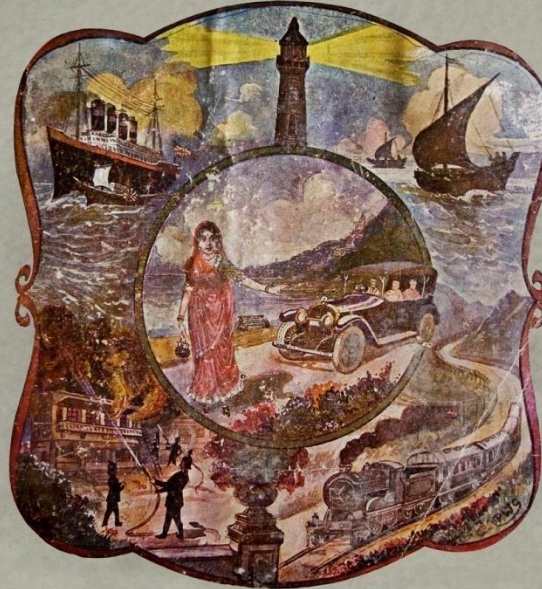
**1929**

JANUARY	MAY	SEPTEMBER
S ... 6 13 20 27 ...	... 5 12 19 26 ...	1 8 15 22 29 ...
M ... 7 14 21 28 ...	... 6 13 20 27 ...	2 9 16 23 30 ...
T ... 8 15 22 29 ...	... 7 14 21 28 ...	3 10 17 24 31 ...
W ... 9 16 23 30 ...	... 1 8 15 22 29 ...	4 11 18 25 ...
T ... 10 17 24 31 ...	... 2 9 16 23 30 ...	5 12 19 26 ...
F ... 4 11 18 25 ...	... 3 10 17 24 31 ...	6 13 20 27 ...
S ... 5 12 19 26 ...	... 4 11 18 25 ...	7 14 21 28 ...
FEBRUARY	JUNE	OCTOBER
S ... 3 10 17 24 ...	... 2 9 16 23 30 ...	... 6 13 20 27 ...
M ... 4 11 18 25 ...	... 3 10 17 24 ...	... 7 14 21 28 ...
T ... 5 12 19 26 ...	... 4 11 18 25 ...	... 8 15 22 29 ...
W ... 6 13 20 27 ...	... 5 12 19 26 ...	... 9 16 23 30 ...
T ... 7 14 21 28 ...	... 6 13 20 27 ...	... 10 17 24 31 ...
F ... 8 15 22 29 ...	... 7 14 21 28 ...	... 4 11 18 25 ...
S ... 9 16 23 ...	... 1 8 15 22 29 ...	... 5 12 19 26 ...
MARCH	JULY	NOVEMBER
S ... 3 10 17 24 31 ...	... 7 14 21 28 ...	... 3 10 17 24 ...
M ... 4 11 18 25 ...	... 1 8 15 22 29 ...	... 4 11 18 25 ...
T ... 5 12 19 26 ...	... 2 9 16 23 30 ...	... 5 12 19 26 ...
W ... 6 13 20 27 ...	... 3 10 17 24 31 ...	... 6 13 20 27 ...
T ... 7 14 21 28 ...	... 4 11 18 25 ...	... 7 14 21 28 ...
F ... 8 15 22 29 ...	... 5 12 19 26 ...	... 8 15 22 29 ...
S ... 9 16 23 30 ...	... 6 13 20 27 ...	... 9 16 23 30 ...
APRIL	AUGUST	DECEMBER
S ... 7 14 21 28 ...	... 4 11 18 25 ...	1 8 15 22 29 ...
M ... 1 8 15 22 29 ...	... 5 12 19 26 ...	2 9 16 23 30 ...
T ... 2 9 16 23 30 ...	... 6 13 20 27 ...	3 10 17 24 31 ...
W ... 3 10 17 24 ...	... 7 14 21 28 ...	... 4 11 18 25 ...
T ... 4 11 18 25 ...	... 1 8 15 22 29 ...	... 5 12 19 26 ...
F ... 5 12 19 26 ...	... 2 9 16 23 30 ...	... 6 13 20 27 ...
S ... 6 13 20 27 ...	... 3 10 17 24 31 ...	... 7 14 21 28 ...



1929  
Gateway to India  
by Archana Hande

# 1933



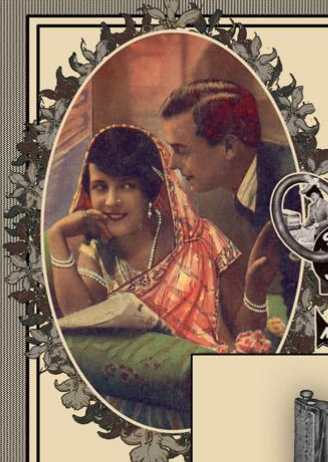
1933

	January	February	March
Sunday	1 1615200	6 161900	6 121900
Monday	2 3016200	6 162000	6 131900
Tuesday	3 1116100	7 162000	7 141900
Wednesday	4 2116100	8 162000	8 151900
Thursday	5 3116100	9 162000	9 161900
Friday	6 4116100	10 162000	10 171900
Saturday	7 5116100	11 162000	11 181900
	April	May	June
Sunday	2 1716200	7 162100	6 111900
Monday	3 2716200	8 162100	6 121900
Tuesday	4 3716200	9 162100	6 131900
Wednesday	5 4716200	10 162100	7 141900
Thursday	6 5716200	11 162100	8 151900
Friday	7 6716200	12 162100	9 161900
Saturday	8 7716200	1 162100	10 171900
	July	August	September
Sunday	2 9 162200	6 162200	6 111900
Monday	3 10 162200	7 162200	6 121900
Tuesday	4 11 162200	8 162200	6 131900
Wednesday	5 12 162200	9 162200	6 141900
Thursday	6 13 162200	10 162200	7 151900
Friday	7 14 162200	11 162200	8 161900
Saturday	8 15 162200	12 162200	9 171900
	October	November	December
Sunday	1 16 162300	6 162300	6 111900
Monday	2 26 162300	7 162300	6 121900
Tuesday	3 36 162300	8 162300	6 131900
Wednesday	4 46 162300	9 162300	6 141900
Thursday	5 56 162300	10 162300	6 151900
Friday	6 66 162300	11 162300	6 161900
Saturday	7 76 162300	12 162300	6 171900

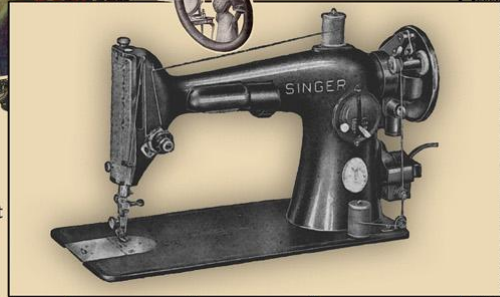
Calendar



1933  
Transportation Delight  
by Archana Hande



the link  
to perfect  
dressmaking



Have you  
seen the latest  
Singer "66"?

	JANUARY	FEBRUARY	MARCH	APRIL
Sun.	... 7 14 21 28 ...	... 4 11 18 25 ...	... 4 11 18 25 ...	1 8 15 22 29 ...
Mon.	1 8 15 22 29 ...	... 5 12 19 26 ...	... 5 12 19 26 ...	2 9 16 23 30 ...
Tue.	2 9 16 23 30 ...	... 6 13 20 27 ...	... 6 13 20 27 ...	3 10 17 24 ...
Wed.	3 10 17 24 31 ...	... 7 14 21 28 ...	... 7 14 21 28 ...	4 11 18 25 ...
Thu.	4 11 18 25 ...	1 8 15 22 ...	1 8 15 22 29 ...	5 12 19 26 ...
Fri.	5 12 19 26 ...	2 9 16 23 ...	2 9 16 23 30 ...	6 13 20 27 ...
Sat.	6 13 20 27 ...	3 10 17 24 ...	3 10 17 24 31 ...	7 14 21 28 ...
	MAY	JUNE	JULY	AUGUST
Sun.	... 6 13 20 27 ...	... 3 10 17 24 ...	1 8 15 22 29 ...	5 12 19 26 ...
Mon.	... 7 14 21 28 ...	... 4 11 18 25 ...	2 9 16 23 30 ...	6 13 20 27 ...
Tue.	1 8 15 22 29 ...	... 5 12 19 26 ...	3 10 17 24 31 ...	7 14 21 28 ...
Wed.	2 9 16 23 30 ...	... 6 13 20 27 ...	4 11 18 25 ...	1 8 15 22 29 ...
Thu.	3 10 17 24 31 ...	... 7 14 21 28 ...	5 12 19 26 ...	2 9 16 23 30 ...
Fri.	4 11 18 25 ...	1 8 15 22 29 ...	6 13 20 27 ...	3 10 17 24 31 ...
Sat.	5 12 19 26 ...	2 9 16 23 30 ...	7 14 21 28 ...	4 11 18 25 ...
	SEPT.	OCTOBER	NOVEMBER	DECEMBER
Sun.	... 2 9 16 23 30 ...	... 7 14 21 28 ...	... 4 11 18 25 ...	2 9 16 23 30 ...
Mon.	... 3 10 17 24 ...	1 8 15 22 29 ...	... 5 12 19 26 ...	3 10 17 24 31 ...
Tue.	... 4 11 18 25 ...	2 9 16 23 30 ...	... 6 13 20 27 ...	4 11 18 25 ...
Wed.	... 5 12 19 26 ...	3 10 17 24 31 ...	... 7 14 21 28 ...	5 12 19 26 ...
Thu.	... 6 13 20 27 ...	4 11 18 25 ...	1 8 15 22 29 ...	6 13 20 27 ...
Fri.	... 7 14 21 28 ...	5 12 19 26 ...	2 9 16 23 30 ...	7 14 21 28 ...
Sat.	1 8 15 22 29 ...	6 13 20 27 ...	3 10 17 24 ...	1 8 15 22 29 ...

1934  
Matching Couple  
by Vinita Gatne





**Bombay Talkies Welcomes the delegates of All India Motion Picture Convention**

**January**

S	M	T	W	T	F	S
1	2	3	4	5	6	7
8	9	10	11	12	13	14
15	16	17	18	19	20	21
22	23	24	25	26	27	28
29	30	31				

**February**

S	M	T	W	T	F	S
		1	2	3	4	
5	6	7	8	9	10	11
12	13	14	15	16	17	18
19	20	21	22	23	24	25
26	27	28	29	30		

**March**

S	M	T	W	T	F	S
						1 2
3	4	5	6	7	8	9
10	11	12	13	14	15	16
17	18	19	20	21	22	23
24	25	26	27	28	29	30

**April**

S	M	T	W	T	F	S
1	2	3	4	5	6	7
8	9	10	11	12	13	14
15	16	17	18	19	20	21
22	23	24	25	26	27	28
29	30	31				

**May**

S	M	T	W	T	F	S
		1	2	3	4	
5	6	7	8	9	10	11
12	13	14	15	16	17	18
19	20	21	22	23	24	25
26	27	28	29	30		

**June**

S	M	T	W	T	F	S
						1 2
3	4	5	6	7	8	9
10	11	12	13	14	15	16
17	18	19	20	21	22	23
24	25	26	27	28	29	30

**July**

S	M	T	W	T	F	S
1	2	3	4	5	6	7
8	9	10	11	12	13	14
15	16	17	18	19	20	21
22	23	24	25	26	27	28
29	30	31				

**August**

S	M	T	W	T	F	S
		1	2	3	4	
5	6	7	8	9	10	11
12	13	14	15	16	17	18
19	20	21	22	23	24	25
26	27	28	29	30		

**September**

S	M	T	W	T	F	S
						1 2
3	4	5	6	7	8	9
10	11	12	13	14	15	16
17	18	19	20	21	22	23
24	25	26	27	28	29	30

**October**

S	M	T	W	T	F	S
1	2	3	4	5	6	7
8	9	10	11	12	13	14
15	16	17	18	19	20	21
22	23	24	25	26	27	28
29	30	31				

**November**

S	M	T	W	T	F	S
		1	2	3	4	
5	6	7	8	9	10	11
12	13	14	15	16	17	18
19	20	21	22	23	24	25
26	27	28	29	30		

**December**

S	M	T	W	T	F	S
						1 2
3	4	5	6	7	8	9
10	11	12	13	14	15	16
17	18	19	20	21	22	23
24	25	26	27	28	29	30

1935  
Bombay Talkies  
by Riddhi Shah

Registered at the G.P.O. as a Newspaper

Price TWOPENCE

# RADIO TIMES

JOURNAL OF THE BRITISH BROADCASTING CORPORATION



Départ de soldats hindous pour le front. Indian soldiers starting for the front



## BROADCASTING CARRIES ON

### CALENDAR 1936.

SUN	JAN.							SUN	JULY																					
	Mon	Tue	Wed	Thu	Fri	Sat	Mon		Tue	Wed	Thu	Fri	Sat																	
1	2	3	4	5	6	7	8	9	10	11	12	13	14	15	16	17	18	19	20	21	22	23	24	25	26	27	28	29	30	31
1	2	3	4	5	6	7	8	9	10	11	12	13	14	15	16	17	18	19	20	21	22	23	24	25	26	27	28	29	30	31
1	2	3	4	5	6	7	8	9	10	11	12	13	14	15	16	17	18	19	20	21	22	23	24	25	26	27	28	29	30	31
1	2	3	4	5	6	7	8	9	10	11	12	13	14	15	16	17	18	19	20	21	22	23	24	25	26	27	28	29	30	31
1	2	3	4	5	6	7	8	9	10	11	12	13	14	15	16	17	18	19	20	21	22	23	24	25	26	27	28	29	30	31
1	2	3	4	5	6	7	8	9	10	11	12	13	14	15	16	17	18	19	20	21	22	23	24	25	26	27	28	29	30	31
1	2	3	4	5	6	7	8	9	10	11	12	13	14	15	16	17	18	19	20	21	22	23	24	25	26	27	28	29	30	31
1	2	3	4	5	6	7	8	9	10	11	12	13	14	15	16	17	18	19	20	21	22	23	24	25	26	27	28	29	30	31
1	2	3	4	5	6	7	8	9	10	11	12	13	14	15	16	17	18	19	20	21	22	23	24	25	26	27	28	29	30	31
1	2	3	4	5	6	7	8	9	10	11	12	13	14	15	16	17	18	19	20	21	22	23	24	25	26	27	28	29	30	31

### CALENDAR 1936.



1936  
Radio & World War  
by Deepshikha Jaiswal

Whatever the occasion, Whatever the day,  
**SWEETIE** supports you all the way!



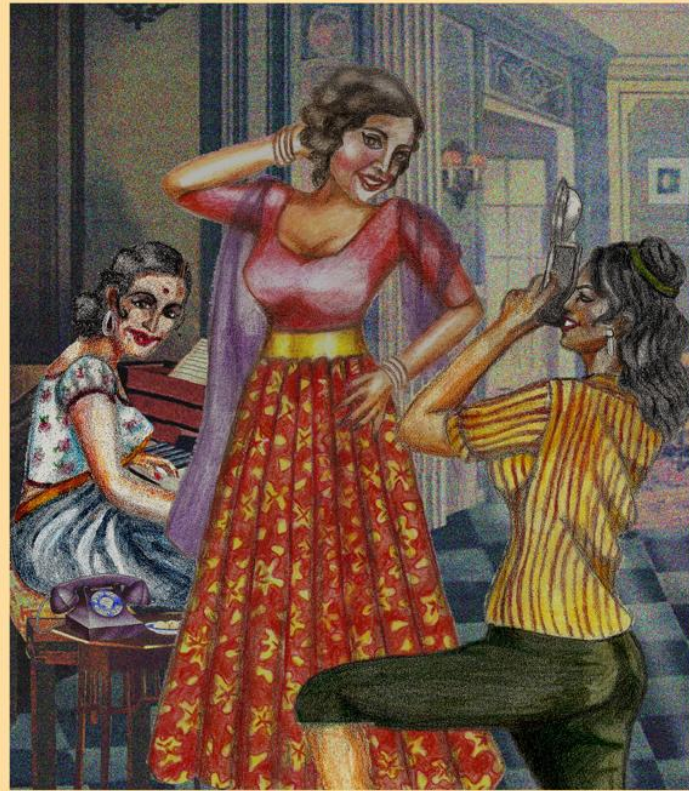
*Sulochana*



*Modern Girl*



*Patience Cooper*



*Songbird*



*Rosebud*



*Officegirl*

CALENDAR 1939



JANUARY	FEBRUARY	MARCH	APRIL	MAY	JUNE
1 2 3 4 5 6 7 8 9 10 11 12 13 14 15 16 17 18 19 20 21 22 23 24 25 26 27 28 29 30 31	1 2 3 4 5 6 7 8 9 10 11 12 13 14 15 16 17 18 19 20 21 22 23 24 25 26 27 28	1 2 3 4 5 6 7 8 9 10 11 12 13 14 15 16 17 18 19 20 21 22 23 24 25 26 27 28 29 30 31	1 2 3 4 5 6 7 8 9 10 11 12 13 14 15 16 17 18 19 20 21 22 23 24 25 26 27 28 29 30	1 2 3 4 5 6 7 8 9 10 11 12 13 14 15 16 17 18 19 20 21 22 23 24 25 26 27 28 29 30 31	1 2 3 4 5 6 7 8 9 10 11 12 13 14 15 16 17 18 19 20 21 22 23 24 25 26 27 28 29 30
JULY	AUGUST	SEPTEMBER	OCTOBER	NOVEMBER	DECEMBER
1 2 3 4 5 6 7 8 9 10 11 12 13 14 15 16 17 18 19 20 21 22 23 24 25 26 27 28 29 30 31	1 2 3 4 5 6 7 8 9 10 11 12 13 14 15 16 17 18 19 20 21 22 23 24 25 26 27 28 29 30 31	1 2 3 4 5 6 7 8 9 10 11 12 13 14 15 16 17 18 19 20 21 22 23 24 25 26 27 28 29 30	1 2 3 4 5 6 7 8 9 10 11 12 13 14 15 16 17 18 19 20 21 22 23 24 25 26 27 28 29 30 31	1 2 3 4 5 6 7 8 9 10 11 12 13 14 15 16 17 18 19 20 21 22 23 24 25 26 27 28 29	1 2 3 4 5 6 7 8 9 10 11 12 13 14 15 16 17 18 19 20 21 22 23 24 25 26 27 28 29 30 31



*SWEETIE* makes you a star  
*SWEETIE* raises your standing in society  
**DEVI & Co. BODICE WORKS LTD.**

MANUFACTURERS OF **SWEETIE** UNDERLOVELIES FOR LADIES

Bombay Calcutta Ahmedabad Madras Karachi Rangoon

1939  
 Underlovelies  
 by Paromita Vohra

*Fly to the Land of Magic  
with your loved ones*



*January 1940*

S	M	T	W	T	F	S
					1	2
3	4	5	6	7	8	9
10	11	12	13	14	15	16
17	18	19	20	21	22	23
24	25	26	27	28	29	30
31						

*March 1940*

S	M	T	W	T	F	S
					1	2
3	4	5	6	7	8	9
10	11	12	13	14	15	16
17	18	19	20	21	22	23
24	25	26	27	28	29	30
31						

*February 1940*

S	M	T	W	T	F	S	S	M	T	W	T	F	S
					1	2	3	4	5	6	7	8	9
10	11	12	13	14	15	16	17	18	19	20	21	22	23
24	25	26	27	28	29	30	31						

1940  
Imperial Airlines  
by Nilima Sheikh

# Hollywood Gossip

"I adore LIPTON'S brisk flavor,"  
says lovable Gracie Allen



JAN						
S	M	T	W	T	F	S
				1	2	3
4	5	6	7	8	9	10
11	12	13	14	15	16	17
18	19	20	21	22	23	24
25	26	27	28	29	30	31

Holidays  
1 - New Year Day  
14 - Pongal  
24 - P. Sa.  
28 - Muharram

FEB						
S	M	T	W	T	F	S
1	2	3	4	5	6	7
8	9	10	11	12	13	14
15	16	17	18	19	20	21
23	23	24	25	26	27	28

Holidays  
13- Mahashivratri  
18 - Ash Wednesday  
21 - P. Sa.

19 41



## LIPTON'S TEAS

Brisk flavor

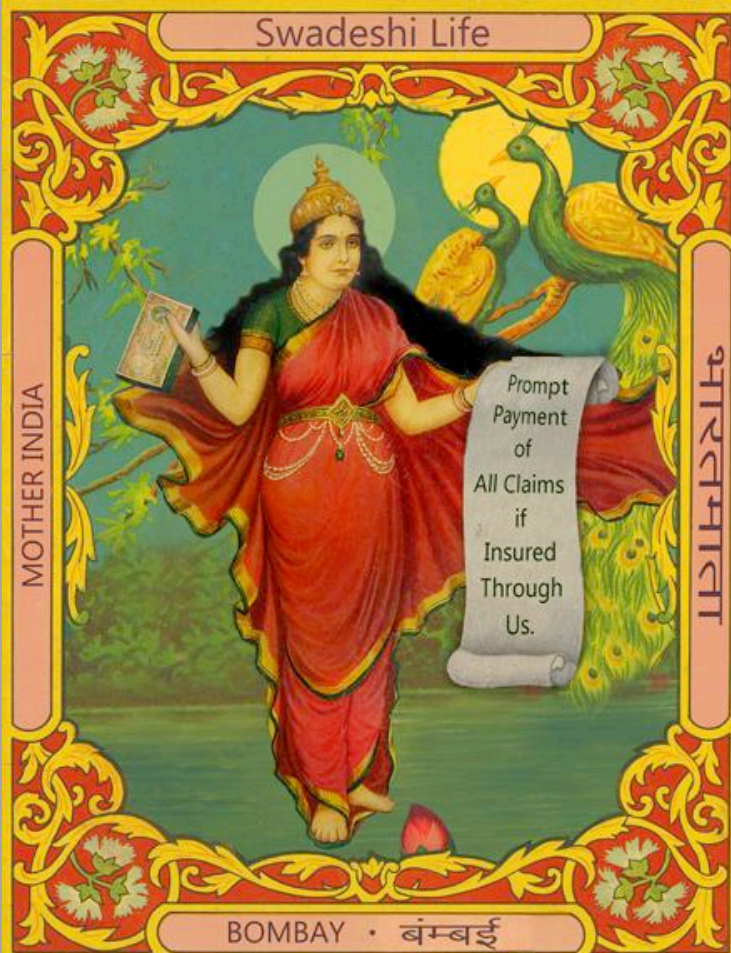


—never flat



1941

Hollywood Loves Lipton Tea  
by Deepshikha Jaiswal



1943 Insurance & Loan Agency 1944

**१९४३-१९४४**

अप्रैल	मई	जून	जुलाई	अगस्त	सितंबर
र ४ ११ १८ २५ र ३० २ १ १६ २३ र ६ १३ २० २७ र ४ ११ १८ २५ र १ ८ १५ २२ २९ र ५ १२ १९ २६	र ५ १२ १९ २६ र ३१ ३ १० १७ २४ र ७ १४ २१ २८ र ५ १२ १९ २६ र २ ९ १६ २३ ३० र ६ १३ २० २७	र ६ १३ २० २७ र ४ ११ १८ २५ र १ ८ १५ २२ २९ र ६ १३ २० २७ र ३ १० १७ २४ र १ ८ १५ २२ २९	र ७ १४ २१ २८ र ५ १२ १९ २६ र २ ९ १६ २३ ३० र ७ १४ २१ २८ र ४ ११ १८ २५ र १ ८ १५ २२ २९	र ८ १५ २२ २९ र ६ १३ २० २७ र ३ १० १७ २४ र ५ १२ १९ २६ र २ ९ १६ २३ ३० र ७ १४ २१ २८ र ४ ११ १८ २५	र ९ १६ २३ ३० र ७ १४ २१ २८ र ४ ११ १८ २५ र ६ १३ २० २७ र ३ १० १७ २४ र ५ १२ १९ २६ र २ ९ १६ २३ ३०
र ३ १० १७ २४ र १ ८ १५ २२ २९ र ५ १२ १९ २६ र ३ १० १७ २४ र ७ १४ २१ २८ र ४ ११ १८ २५	र ४ ११ १८ २५ र २ ९ १६ २३ ३० र ६ १३ २० २७ र ३ १० १७ २४ र ५ १२ १९ २६ र २ ९ १६ २३ ३०	र ५ १२ १९ २६ र ३ १० १७ २४ र ६ १३ २० २७ र ४ ११ १८ २५ र २ ९ १६ २३ ३० र ७ १४ २१ २८	र ६ १३ २० २७ र ४ ११ १८ २५ र १ ८ १५ २२ २९ र ५ १२ १९ २६ र ३ १० १७ २४ र ६ १३ २० २७	र ७ १४ २१ २८ र ५ १२ १९ २६ र २ ९ १६ २३ ३० र ६ १३ २० २७ र ४ ११ १८ २५ र ३ १० १७ २४	र ८ १५ २२ २९ र ६ १३ २० २७ र ३ १० १७ २४ र ५ १२ १९ २६ र २ ९ १६ २३ ३० र ७ १४ २१ २८
अक्टूबर	नवंबर	दिसंबर	जनवरी	फरवरी	मार्च
र २५ ३ १० १७ २४ र ७ १४ २१ २८ र ५ १२ १९ २६ र ३० २ ९ १६ २३ र ६ १३ २० २७ र ५ १२ १९ २६	र ४ ११ १८ २५ र १ ८ १५ २२ २९ र ६ १३ २० २७ र ३१ ३ १० १७ २४ र ७ १४ २१ २८ र ४ ११ १८ २५	र ५ १२ १९ २६ र २ ९ १६ २३ ३० र ७ १४ २१ २८ र ४ ११ १८ २५ र १ ८ १५ २२ २९ र ७ १४ २१ २८	र ६ १३ २० २७ र ३ १० १७ २४ र ५ १२ १९ २६ र २ ९ १६ २३ ३० र ५ १२ १९ २६ र ३ १० १७ २४	र ७ १४ २१ २८ र ४ ११ १८ २५ र १ ८ १५ २२ २९ र ६ १३ २० २७ र ३ १० १७ २४ र ५ १२ १९ २६	र ८ १५ २२ २९ र ५ १२ १९ २६ र ३ १० १७ २४ र ६ १३ २० २७ र ४ ११ १८ २५ र २ ९ १६ २३ ३०
र ९ १६ २३ ३० र ६ १३ २० २७ र ४ ११ १८ २५ र १ ८ १५ २२ २९ र ५ १२ १९ २६ र ३ १० १७ २४	र १० १७ २४ र ५ १२ १९ २६ र ३ १० १७ २४ र ६ १३ २० २७ र ४ ११ १८ २५ र २ ९ १६ २३ ३०	र ११ १८ २५ र ६ १३ २० २७ र ४ ११ १८ २५ र ३ १० १७ २४ र ५ १२ १९ २६ र २ ९ १६ २३ ३०	र १२ १९ २६ र ७ १४ २१ २८ र ५ १२ १९ २६ र ४ ११ १८ २५ र ३ १० १७ २४ र ६ १३ २० २७	र १३ २० २७ र ८ १५ २२ २९ र ६ १३ २० २७ र ५ १२ १९ २६ र ४ ११ १८ २५ र ३ १० १७ २४	र १४ २१ २८ र ९ १६ २३ ३० र ७ १४ २१ २८ र ६ १३ २० २७ र ५ १२ १९ २६ र ४ ११ १८ २५

1943-44 Insured Motherland Found Image

Haveli . Garden . Cottage . Godown . Hospital . Court room



Village Market  
Police Lock-up



'Fountain and Lake in Monsoon'



Temple

Hollywood Style Shooting Facility



Special Concession on Block Booking

Carpenters,  
Dress Men,  
Electrician  
Available

Free Make Up  
Room with  
Floor Booking

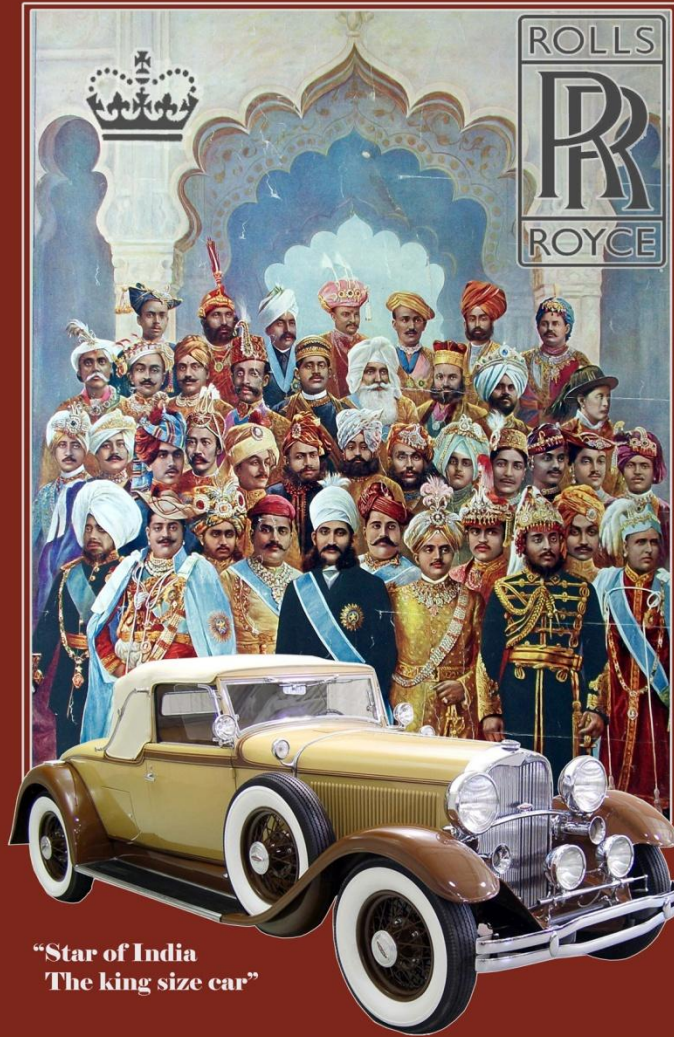
1945		JANUARY						1945	
SUN	MON	TUE	WED	THU	FRI	SAT			
	1	2	3	4	5	6			
7	8	9	10	11	12	13			
14	15	16	17	18	19	20			
21	22	23	24	25	26	27			
28	29	30	31						

**Chandivali Studio**

Proprietor Shri Chandrarao Kadam

1945  
Outdoor Locations  
by Arpita Singh

1946



“Star of India  
The king size car”

JANUARY		FEBRUARY		MARCH		APRIL		MAY		JUNE	
S	6 13 20 27	S	3 10 17 24	S	3 10 17 24 31	S	7 14 21 28	S	5 12 19 26	S	2 9 16 23 30
M	7 14 21 28	M	4 11 18 25	M	4 11 18 25	M	1 8 15 22 29	M	6 13 20 27	M	3 10 17 24
Tu	1 8 15 22 29	Tu	5 12 19 26	Tu	5 12 19 26	Tu	2 9 16 23 30	Tu	7 14 21 28	Tu	4 11 18 25
W	2 9 16 23 30	W	6 13 20 27	W	6 13 20 27	W	3 10 17 24	W	1 8 15 22 29	W	5 12 19 26
Th	3 10 17 24 31	Th	7 14 21 28	Th	7 14 21 28	Th	4 11 18 25	Th	2 9 16 23 30	Th	6 13 20 27
F	4 11 18 25	F	1 8 15 22	F	1 8 15 22 29	F	5 12 19 26	F	3 10 17 24 31	F	7 14 21 28
S	5 12 19 26	S	2 9 16 23	S	2 9 16 23 30	S	6 13 20 27	S	4 11 18 25	S	1 8 15 22 29
JULY		AUGUST		SEPTEMBER		OCTOBER		NOVEMBER		DECEMBER	
S	7 14 21 28	S	4 11 18 25	S	1 8 15 22 29	S	6 13 20 27	S	3 10 17 24	S	1 8 15 22 29
M	1 8 15 22 29	M	6 13 20 27	M	2 9 16 23 30	M	7 14 21 28	M	4 11 18 25	M	2 9 16 23 30
Tu	2 9 16 23 30	Tu	6 13 20 27	Tu	3 10 17 24	Tu	1 8 15 22 29	Tu	5 12 19 26	Tu	3 10 17 24 31
W	3 10 17 24 31	W	7 14 21 28	W	4 11 18 25	W	2 9 16 23 30	W	4 11 18 25	W	4 11 18 25 31
Th	4 11 18 25	Th	1 8 15 22 29	Th	5 12 19 26	Th	3 10 17 24 31	Th	7 14 21 28	Th	5 12 19 26
F	5 12 19 26	F	2 9 16 23 30	F	6 13 20 27	F	4 11 18 25	F	1 8 15 22 29	F	6 13 20 27
S	6 13 20 27	S	3 10 17 24 31	S	7 14 21 28	S	5 12 19 26	S	2 9 16 23 30	S	7 14 21 28

A Car that Moves Like a Magic Carpet.....

1946  
Star of India  
by Vinita Gatne

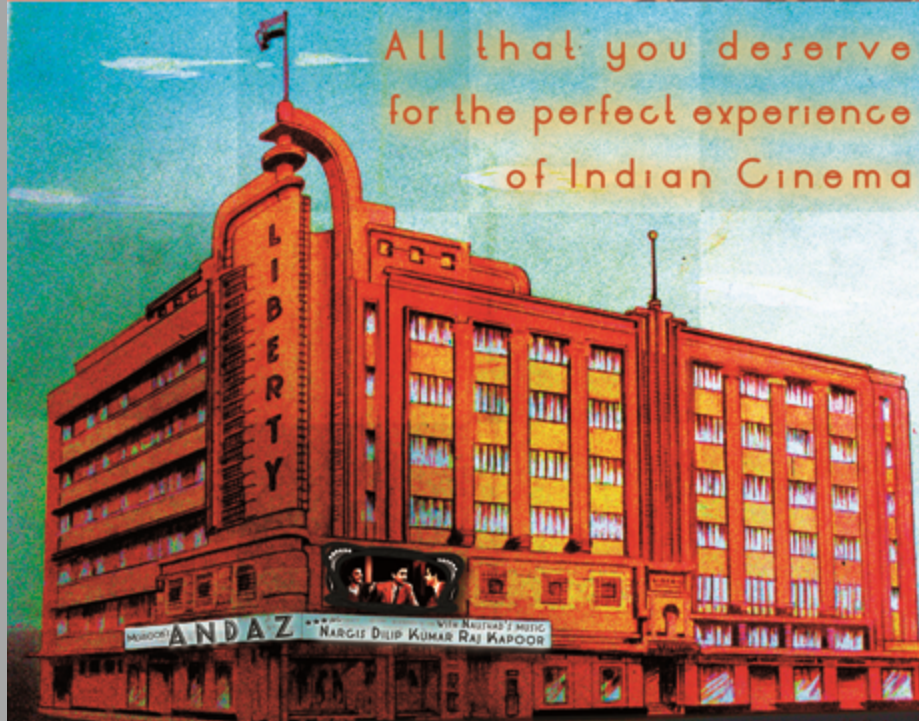


# LIBERTY

SHOW PLACE OF THE NATION



All that you deserve  
for the perfect experience  
of Indian Cinema



PUSHBACK SEATS, AIR CONDITIONING, FINE DINING, CAR PARKING, BEST QUALITY PICTURE AND SOUND.

## 1949

JANUARY	FEBRUARY	MARCH	APRIL	MAY	JUNE	JULY	AUGUST	SEPTEMBER	OCTOBER	NOVEMBER	DECEMBER
1 A T W T F S S 2 3 4 5 6 7 8 9 10 11 12 13 14 15 16 17 18 19 20 21 22 23 24 25 26 27 28 29 30 X	1 A T W T F S S 2 3 4 5 6 7 8 9 10 11 12 13 14 15 16 17 18 19 20 21 22 23 24 25 26 27 28 29	1 A T W T F S S 2 3 4 5 6 7 8 9 10 11 12 13 14 15 16 17 18 19 20 21 22 23 24 25 26 27 28 29 30 X	1 A T W T F S S 2 3 4 5 6 7 8 9 10 11 12 13 14 15 16 17 18 19 20 21 22 23 24 25 26 27 28 29 30	1 A T W T F S S 2 3 4 5 6 7 8 9 10 11 12 13 14 15 16 17 18 19 20 21 22 23 24 25 26 27 28 29 30 X	1 A T W T F S S 2 3 4 5 6 7 8 9 10 11 12 13 14 15 16 17 18 19 20 21 22 23 24 25 26 27 28 29 30	1 A T W T F S S 2 3 4 5 6 7 8 9 10 11 12 13 14 15 16 17 18 19 20 21 22 23 24 25 26 27 28 29 30	1 A T W T F S S 2 3 4 5 6 7 8 9 10 11 12 13 14 15 16 17 18 19 20 21 22 23 24 25 26 27 28 29 30	1 A T W T F S S 2 3 4 5 6 7 8 9 10 11 12 13 14 15 16 17 18 19 20 21 22 23 24 25 26 27 28 29 30	1 A T W T F S S 2 3 4 5 6 7 8 9 10 11 12 13 14 15 16 17 18 19 20 21 22 23 24 25 26 27 28 29 30	1 A T W T F S S 2 3 4 5 6 7 8 9 10 11 12 13 14 15 16 17 18 19 20 21 22 23 24 25 26 27 28 29 30	

1949  
Liberty  
by Abeer Gupta

**WE MAKE ALL KINDS OF WALKING STICKS  
WITH BEST QUALITY OF WOOD.**



Protect yourself from thieves and dogs.

We also supply to the police department of India.



Door hato aiyee duniya  
vaalon hindustan hamaara hai.

Quit India O evil forces, Hindustan belongs to us



The great stick figures of our times?

Available in all sizes.

**1953 CALENDAR 1953**

January	February	March	April	May	June
S M Tu W Th F S 1 2 3 4 5 6 7 8 9 10 11 12 13 14 15 16 17 18 19 20 21 22 23 24 25 26 27 28 29 30 31	S M Tu W Th F S 1 2 3 4 5 6 7 8 9 10 11 12 13 14 15 16 17 18 19 20 21 22 23 24 25 26 27 28	S M Tu W Th F S 1 2 3 4 5 6 7 8 9 10 11 12 13 14 15 16 17 18 19 20 21 22 23 24 25 26 27 28 29 30 31	S M Tu W Th F S 1 2 3 4 5 6 7 8 9 10 11 12 13 14 15 16 17 18 19 20 21 22 23 24 25 26 27 28 29 30	S M Tu W Th F S 1 2 3 4 5 6 7 8 9 10 11 12 13 14 15 16 17 18 19 20 21 22 23 24 25 26 27 28 29 30 31	S M Tu W Th F S 1 2 3 4 5 6 7 8 9 10 11 12 13 14 15 16 17 18 19 20 21 22 23 24 25 26 27 28 29 30
July	August	September	October	November	December
S M Tu W Th F S 1 2 3 4 5 6 7 8 9 10 11 12 13 14 15 16 17 18 19 20 21 22 23 24 25 26 27 28 29 30 31	S M Tu W Th F S 1 2 3 4 5 6 7 8 9 10 11 12 13 14 15 16 17 18 19 20 21 22 23 24 25 26 27 28 29 30 31	S M Tu W Th F S 1 2 3 4 5 6 7 8 9 10 11 12 13 14 15 16 17 18 19 20 21 22 23 24 25 26 27 28 29 30	S M Tu W Th F S 1 2 3 4 5 6 7 8 9 10 11 12 13 14 15 16 17 18 19 20 21 22 23 24 25 26 27 28 29 30 31 29 30	S M Tu W Th F S 1 2 3 4 5 6 7 8 9 10 11 12 13 14 15 16 17 18 19 20 21 22 23 24 25 26 27 28 29 30	S M Tu W Th F S 1 2 3 4 5 6 7 8 9 10 11 12 13 14 15 16 17 18 19 20 21 22 23 24 25 26 27 28 29 30 31

1953  
Walking Stick  
by Kamal Swaroop

INDRANI RAHMAN

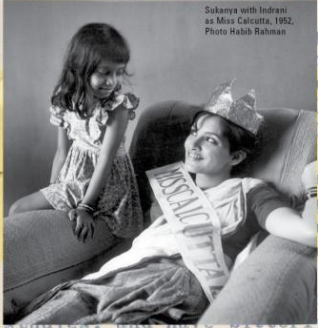


214/2 Lower Circular Rd.  
Calcutta 17,  
Jan.15th,1953.

to stop its circulation. At least my name is not on it anyway  
AND DONT EVER CALL ME MISS INDIA? Mohan. I think I can  
DON'T EVER CALL ME MISS INDIA?  
Please do send  
Pinaki is making

Dear Mohan Khokar;

Many thanks for your



Sukanya with Indrani  
as Miss Calcutta, 1952.  
Photo Habib Rahman



Miss India Contest, Nargis, Indrani.

Raj Kapoor, SK Panil, Brabourne Stadium, Bombay 1952

to stop its circulation. At least my name  
AND DONT EVER CALL ME MISS INDIA?



rojas snapshots.

Very best,

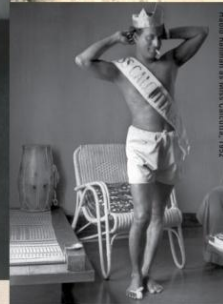
*Indrani*

P.S. So much enjoyed your article in Inst  
a hagsome couple! My husband and I wrer  
in letters as well as what have you- the  
should write more.

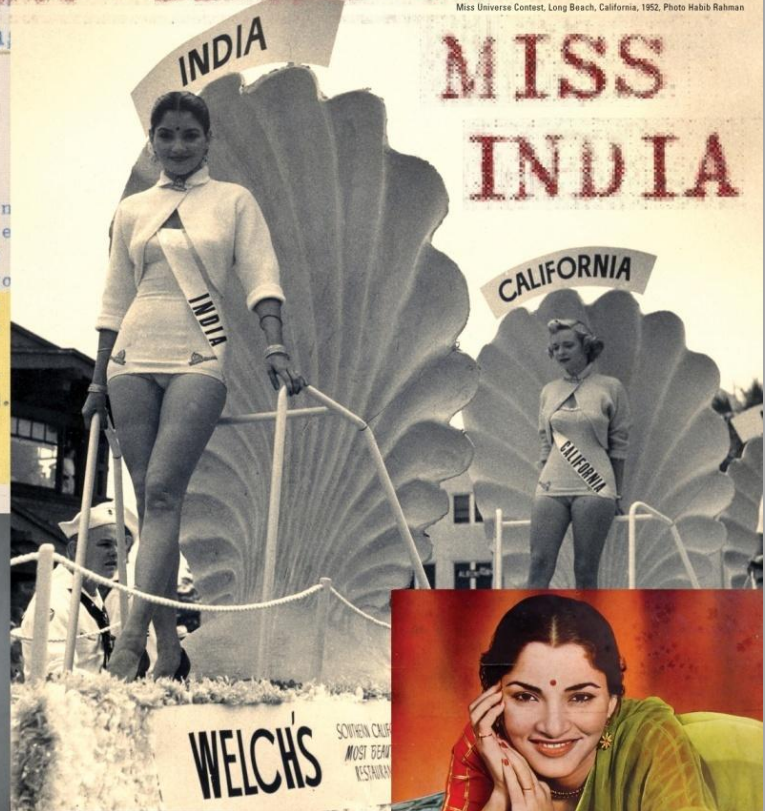
Letter: Mohan Khokhar Collection,  
Courtesy Ashish Khokhar



Photo Habib Rahman



Indrani Rahman as Miss Calcutta, 1952



MISS INDIA

CALIFORNIA

WELCH'S



Calendar Photo by  
Ahmed Ali, Ram Rahman  
born November 18, 1955

DECEMBER 1955							JANUARY 1956						
SUN	MON	TUE	WED	THUR	FRID	SAT	SUN	MON	TUE	WED	THUR	FRID	SAT
					1	2	3	4	5	6	7	8	9
4	5	6	7	8	9	10	11	12	13	14	15	16	17
18	19	20	21	22	23	24	25	26	27	28	29	30	31

1955  
Don't Call me Miss India  
by Ram Rahman

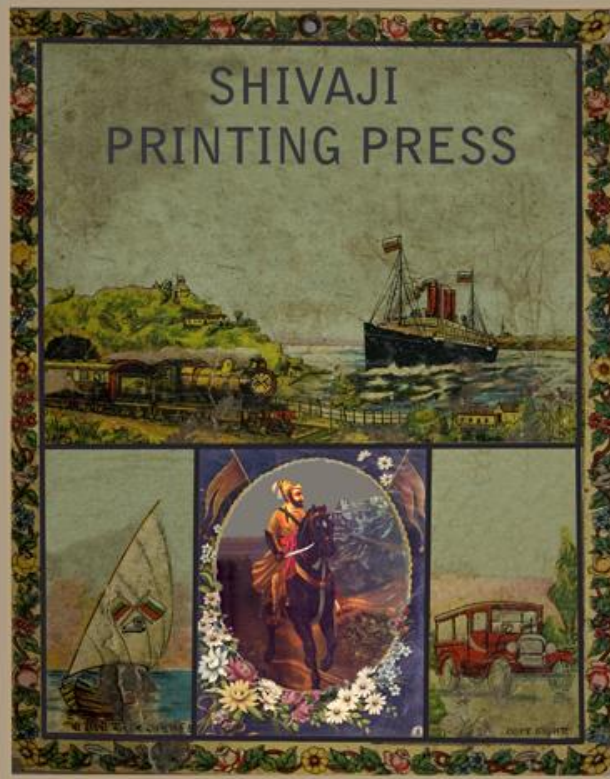
# Dates May be Printed on Ground in HINDI

ON REQUEST

★ ★ ★

This is a sample of our complete High Grade Pictorial Calendar in 11½ X 18 size with tin mounting on top and bottom with a hanging tape & Dates printed on ground in English & with customers advertisement in 1 Colour. For rates see Clause No. 3 of our High Grade Pictorial Calendars Price List.

★ ★ ★



★ ★ ★

In case, dates printed on ground is required, it is very essential to mention on the order form whether dates printed on ground is required in English or Hindi.

In the absence of this instruction, dates will be printed in English, which please note.

★ ★ ★

THIS GROUND IS PRINTED IN ORDINARY COLOUR

		1956 CALENDAR 1956																									
		January		February		March		April		May		June															
Sun	1	8	15	22	29	5	12	19	26	4	11	18	25	1	8	15	22	29	6	13	20	27	3	10	17	24	
Mon	2	9	16	23	30	6	13	20	27	5	12	19	26	2	9	16	23	30	7	14	21	28	4	11	18	25	
Tue	3	10	17	24	31	7	14	21	28	6	13	20	27	3	10	17	24	1	8	15	22	29	5	12	19	26	
Wed	4	11	18	25		8	15	22	29	7	14	21	28	4	11	18	25	2	9	16	23	30	6	13	20	27	
Thu	5	12	19	26	1	8	15	22	29	8	15	22	29	5	12	19	26	3	10	17	24	31	7	14	21	28	
Fri	6	13	20	27	2	9	16	23	30	9	16	23	30	6	13	20	27	4	11	18	25		8	15	22	29	
Sat	7	14	21	28	3	10	17	24	31	10	17	24	31	7	14	21	28	5	12	19	26	2	9	16	23	30	
		July		August		September		October		November		December															
Sun	1	8	15	22	29	5	12	19	26	30	2	9	16	23	7	14	21	28	4	11	18	25	30	2	9	16	23
Mon	2	9	16	23	30	6	13	20	27	3	10	17	24	1	8	15	22	29	5	12	19	26	31	3	10	17	24
Tue	3	10	17	24	31	7	14	21	28	4	11	18	25	2	9	16	23	30	6	13	20	27	4	11	18	25	
Wed	4	11	18	25		8	15	22	29	5	12	19	26	3	10	17	24	31	7	14	21	28	5	12	19	26	
Thu	5	12	19	26	1	8	15	22	29	6	13	20	27	4	11	18	25	2	9	16	23	30	6	13	20	27	
Fri	6	13	20	27	2	9	16	23	30	7	14	21	28	5	12	19	26	3	10	17	24		8	15	22	29	
Sat	7	14	21	28	3	10	17	24	31	8	15	22	29	6	13	20	27	4	11	18	25	1	8	15	22	29	

1956  
Shivaji Printing Press  
by Rupal Shah

# GOVARDHAN UMBRELLA

## 1957

Umbrella  
for stars



### January

S	M	Tu	WTh	F	S
			1	2	3
4	5	6	7	8	9
10	11	12	13	14	15
16	17	18	19	20	21
22	23	24	25	26	27
28	29	30	31		

### February

S	M	Tu	WTh	F	S
					1
2	3	4	5	6	7
8	9	10	11	12	13
14	15	16	17	18	19
20	21	22	23	24	25
26	27	28	29	30	

### March

S	M	Tu	WTh	F	S
					1
2	3	4	5	6	7
8	9	10	11	12	13
14	15	16	17	18	19
20	21	22	23	24	25
26	27	28	29	30	31

### April

S	M	Tu	WTh	F	S
					1
2	3	4	5	6	7
8	9	10	11	12	13
14	15	16	17	18	19
20	21	22	23	24	25
26	27	28	29	30	

### May

S	M	Tu	WTh	F	S
					1
2	3	4	5	6	7
8	9	10	11	12	13
14	15	16	17	18	19
20	21	22	23	24	25
26	27	28	29	30	31

### June

S	M	Tu	WTh	F	S
					1
2	3	4	5	6	7
8	9	10	11	12	13
14	15	16	17	18	19
20	21	22	23	24	25
26	27	28	29	30	

### July

S	M	Tu	WTh	F	S
					1
2	3	4	5	6	7
8	9	10	11	12	13
14	15	16	17	18	19
20	21	22	23	24	25
26	27	28	29	30	31

### August

S	M	Tu	WTh	F	S
					1
2	3	4	5	6	7
8	9	10	11	12	13
14	15	16	17	18	19
20	21	22	23	24	25
26	27	28	29	30	31

### September

S	M	Tu	WTh	F	S
					1
2	3	4	5	6	7
8	9	10	11	12	13
14	15	16	17	18	19
20	21	22	23	24	25
26	27	28	29	30	

### October

S	M	Tu	WTh	F	S
					1
2	3	4	5	6	7
8	9	10	11	12	13
14	15	16	17	18	19
20	21	22	23	24	25
26	27	28	29	30	31

### November

S	M	Tu	WTh	F	S
					1
2	3	4	5	6	7
8	9	10	11	12	13
14	15	16	17	18	19
20	21	22	23	24	25
26	27	28	29	30	

### December

S	M	Tu	WTh	F	S
					1
2	3	4	5	6	7
8	9	10	11	12	13
14	15	16	17	18	19
20	21	22	23	24	25
26	27	28	29	30	31

1957  
Govardhan  
by Kamal Swaroop

MOTHER INDIA  
HARVESTERS & FARM IMPLEMENTS



I hope nobody realises that I have done that

*... Does your work in the blink of an eye*

1961

April

S M T W T F S S M T W T F S S M T W T F S S M T W T F S  
1 2 3 4 5 6 7 8 9 10 11 12 13 14 15 16 17 18 19 20 21 22 23 24 25 26 27 28 29 30

May

S M T W T F S S M T W T F S S M T W T F S S M T W T F S  
1 2 3 4 5 6 7 8 9 10 11 12 13 14 15 16 17 18 19 20 21 22 23 24 25 26 27 28 29 30 31

June

S M T W T F S S M T W T F S S M T W T F S S M T W T F S  
1 2 3 4 5 6 7 8 9 10 11 12 13 14 15 16 17 18 19 20 21 22 23 24 25 26 27 28 29 30

1961  
Mother India  
by Tushar Joag



पांडुरंग व्यायामशाला  
सार्वजनिक क्रीडा मंडल



श्री फाडनिस डॉ. भाऊ



श्री फाडनिस डॉ. भाऊ

जय महाराष्ट्र  
१९६१

**JAN**

S	M	T	W	T	F	S
05	07	08	09	10	11	12
13	14	15	16	17	18	19
20	21	22	23	24	25	26
27	28	29	30	31		

**APR**

S	M	T	W	T	F	S
05	07	08	09	10	11	12
13	14	15	16	17	18	19
20	21	22	23	24	25	26
27	28	29	30	01	02	03

**JUL**

S	M	T	W	T	F	S
05	07	08	09	10	11	12
13	14	15	16	17	18	19
20	21	22	23	24	25	26
27	28	29	30	31		

**OCT**

S	M	T	W	T	F	S
05	07	08	09	10	11	12
13	14	15	16	17	18	19
20	21	22	23	24	25	26
27	28	29	30	31		

**FEB**

S	M	T	W	T	F	S
05	07	08	09	10	11	12
13	14	15	16	17	18	19
20	21	22	23	24	25	26
27	28	29	01	02	03	04

**MAY**

S	M	T	W	T	F	S
05	07	08	09	10	11	12
13	14	15	16	17	18	19
20	21	22	23	24	25	26
27	28	29	30	31		

**AUG**

S	M	T	W	T	F	S
05	07	08	09	10	11	12
13	14	15	16	17	18	19
20	21	22	23	24	25	26
27	28	29	30	31		

**NOV**

S	M	T	W	T	F	S
05	07	08	09	10	11	12
13	14	15	16	17	18	19
20	21	22	23	24	25	26
27	28	29	30	01	02	03

**MAR**

S	M	T	W	T	F	S
05	07	08	09	10	11	12
13	14	15	16	17	18	19
20	21	22	23	24	25	26
27	28	29	30	31		

**JUN**

S	M	T	W	T	F	S
05	07	08	09	10	11	12
13	14	15	16	17	18	19
20	21	22	23	24	25	26
27	28	29	30	01	02	03

**SEP**

S	M	T	W	T	F	S
05	07	08	09	10	11	12
13	14	15	16	17	18	19
20	21	22	23	24	25	26
27	28	29	30	01	02	03

**DEC**

S	M	T	W	T	F	S
05	07	08	09	10	11	12
13	14	15	16	17	18	19
20	21	22	23	24	25	26
27	28	29	30	31		



1961  
Maharashtra Jaga Re  
by Vishal Rawlley

JANUARY

S	M	TU	W	TH	F	S
	1	2	3	4		
5	6	7	8	9	10	11
12	13	14	15	16	17	18
19	20	21	22	23	24	25
26	27	28	29	30	31	

FEBRUARY

S	M	TU	W	TH	F	S
						1
2	3	4	5	6	7	8
9	10	11	12	13	14	15
16	17	18	19	20	21	22
23	24	25	26	27	28	29

MARCH

S	M	TU	W	TH	F	S
1	2	3	4	5	6	7
8	9	10	11	12	13	14
15	16	17	18	19	20	21
22	23	24	25	26	27	28
29	30	31				

APRIL

S	M	TU	W	TH	F	S
						1
2	3	4	5	6	7	8
9	10	11	12	13	14	15
16	17	18	19	20	21	22
23	24	25	26	27	28	29
30	31					

MAY

S	M	TU	W	TH	F	S
						1
2	3	4	5	6	7	8
9	10	11	12	13	14	15
16	17	18	19	20	21	22
23	24	25	26	27	28	29
30	31					

JUNE

S	M	TU	W	TH	F	S
						1
2	3	4	5	6	7	8
9	10	11	12	13	14	15
16	17	18	19	20	21	22
23	24	25	26	27	28	29
30	31					

JULY

S	M	TU	W	TH	F	S
						1
2	3	4	5	6	7	8
9	10	11	12	13	14	15
16	17	18	19	20	21	22
23	24	25	26	27	28	29
30	31					

AUGUST

S	M	TU	W	TH	F	S
						1
2	3	4	5	6	7	8
9	10	11	12	13	14	15
16	17	18	19	20	21	22
23	24	25	26	27	28	29
30	31					

SEPTEMBER

S	M	TU	W	TH	F	S
						1
2	3	4	5	6	7	8
9	10	11	12	13	14	15
16	17	18	19	20	21	22
23	24	25	26	27	28	29
30						

OCTOBER

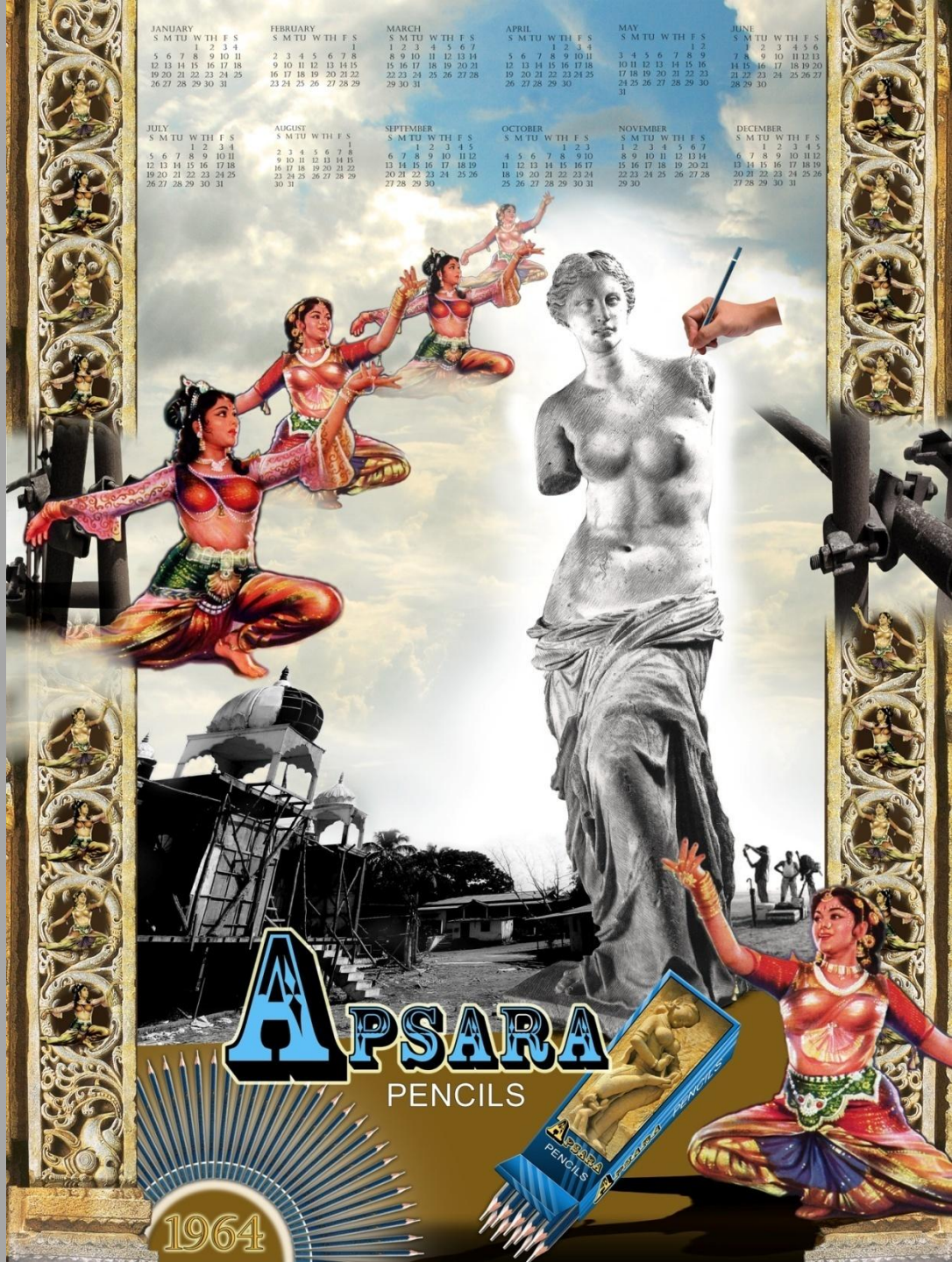
S	M	TU	W	TH	F	S
						1
2	3	4	5	6	7	8
9	10	11	12	13	14	15
16	17	18	19	20	21	22
23	24	25	26	27	28	29
30	31					

NOVEMBER

S	M	TU	W	TH	F	S
						1
2	3	4	5	6	7	8
9	10	11	12	13	14	15
16	17	18	19	20	21	22
23	24	25	26	27	28	29
30						

DECEMBER

S	M	TU	W	TH	F	S
						1
2	3	4	5	6	7	8
9	10	11	12	13	14	15
16	17	18	19	20	21	22
23	24	25	26	27	28	29
30	31					



**A**PSARA  
PENCILS

1964

1964  
Apsaras  
by Chhatrapati Dutta



# 1966



	S	M	T	W	T	F	S		S	M	T	W	T	F	S
	U	O	U	E	H	R	A		U	O	U	E	H	R	A
	N	N	E	D	U	I	T		N	N	E	D	U	I	T
<b>JANUARY</b>	30	31					1	<b>JULY</b>	31					1	2
	2	3	4	5	6	7	8		3	4	5	6	7	8	9
	9	10	11	12	13	14	15		10	11	12	13	14	15	16
	16	17	18	19	20	21	22		17	18	19	20	21	22	23
	23	24	25	26	27	28	29		24	25	26	27	28	29	30
<b>FEBRUARY</b>				1	2	3	4	<b>AUGUST</b>							
	6	7	8	9	10	11	12		7	8	9	10	11	12	13
	13	14	15	16	17	18	19		14	15	16	17	18	19	20
	20	21	22	23	24	25	26		21	22	23	24	25	26	27
	27	28							28	29	30	31			
<b>MARCH</b>				1	2	3	4	<b>SEPTEMBER</b>							
	6	7	8	9	10	11	12		4	5	6	7	8	9	10
	13	14	15	16	17	18	19		11	12	13	14	15	16	17
	20	21	22	23	24	25	26		18	19	20	21	22	23	24
	27	28	29	30	31				25	26	27	28	29	30	
<b>APRIL</b>						1	2	<b>OCTOBER</b>	30	31					
	3	4	5	6	7	8	9		2	3	4	5	6	7	8
	10	11	12	13	14	15	16		9	10	11	12	13	14	15
	17	18	19	20	21	22	23		16	17	18	19	20	21	22
	24	25	26	27	28	29	30		23	24	25	26	27	28	29
<b>MAY</b>								<b>NOVEMBER</b>							
	1	2	3	4	5	6	7		6	7	8	9	10	11	12
	8	9	10	11	12	13	14		13	14	15	16	17	18	19
	15	16	17	18	19	20	21		20	21	22	23	24	25	26
	22	23	24	25	26	27	28		27	28	29	30			
	29	30	31												
<b>JUNE</b>								<b>DECEMBER</b>							
	5	6	7	8	9	10	11		4	5	6	7	8	9	10
	12	13	14	15	16	17	18		11	12	13	14	15	16	17
	19	20	21	22	23	24	25		18	19	20	21	22	23	24
	26	27	28	29	30				25	26	27	28	29	30	31

उत्कृष्ट पुस्तके  
मोठ्या संख्येत मराठी, हिन्दी व इंग्रजी  
मध्ये उपलब्ध.

वाचण्यासाठी पुस्तके उसनी मिळतील.

४३, दुसरा मजला, सी. पी. टँक मार्ग,  
गिरगाव, मुंबई - ४०००४.

## नव वर्ष वाचनालय



ज्ञानकोश  
शाळेची पुस्तके  
जेवण वनवाण्याची पुस्तके  
वर्तमान आणि पत्रिका  
कादंबरी  
चित्रकथा आणि गोष्टीची पुस्तके

समासद शुल्क दरमहा १० रुपये  
विद्यार्थ्यांसाठी खास सूट

1966  
Lal Bagh cha Raja  
by Vinita Gatne



# 1967

# Agfa makes you feel like a star too



<b>JAN</b>	S	M	T	W	T	F	S
	1	2	3	4	5	6	7
	8	9	10	11	12	13	14
	15	16	17	18	19	20	21
	22	23	24	25	26	27	28
	29	30	31				

<b>JUL</b>	S	M	T	W	T	F	S
	1	2	3	4	5	6	7
	8	9	10	11	12	13	14
	15	16	17	18	19	20	21
	22	23	24	25	26	27	28
	29	30	31				

<b>FEB</b>	S	M	T	W	T	F	S
				1	2	3	4
	5	6	7	8	9	10	11
	12	13	14	15	16	17	18
	19	20	21	22	23	24	25
	26	27	28				

<b>AUG</b>	S	M	T	W	T	F	S
				1	2	3	4
	5	6	7	8	9	10	11
	12	13	14	15	16	17	18
	19	20	21	22	23	24	25
	26	27	28	29	30	31	

<b>MAR</b>	S	M	T	W	T	F	S
				1	2	3	4
	5	6	7	8	9	10	11
	12	13	14	15	16	17	18
	19	20	21	22	23	24	25
	26	27	28	29	30	31	

<b>SEP</b>	S	M	T	W	T	F	S
					1	2	
	3	4	5	6	7	8	9
	10	11	12	13	14	15	16
	17	18	19	20	21	22	23
	24	25	26	27	28	29	30

<b>APR</b>	S	M	T	W	T	F	S
							1
	2	3	4	5	6	7	8
	9	10	11	12	13	14	15
	16	17	18	19	20	21	22
	23	24	25	26	27	28	29
	30						

<b>OCT</b>	S	M	T	W	T	F	S
	1	2	3	4	5	6	7
	8	9	10	11	12	13	10
	15	16	17	18	19	20	21
	22	23	24	25	26	27	28
	29	30	31				

<b>MAY</b>	S	M	T	W	T	F	S
		1	2	3	4	5	6
	7	8	9	10	11	12	13
	14	15	16	17	18	19	20
	21	22	23	24	25	26	27
	28	29	30	31			

<b>NOV</b>	S	M	T	W	T	F	S
					1	2	3
	4	5	6	7	8	9	10
	11	12	13	14	15	16	17
	18	19	20	21	22	23	24
	25	26	27	28	29	30	

<b>JUN</b>	S	M	T	W	T	F	S
					1	2	3
	4	5	6	7	8	9	10
	11	12	13	14	15	16	17
	18	19	20	21	22	23	24
	25	26	27	28	29	30	

<b>DEC</b>	S	M	T	W	T	F	S
						1	2
	3	4	5	6	7	8	9
	10	11	12	13	14	15	16
	17	18	19	20	21	22	23
	24	25	26	27	28	29	30
	31						

## Cameras – international models made in India



Recommended retail price  
Rs. 70.25

AND BUY ONLY



AGFA-GEVAERT INDIA LIMITED  
Merchant Chambers 41 New Marine Lines, Bombay 400 020  
Branches: Bombay – New Delhi – Calcutta – Madras

© Registered Trademark of Agfa-Gevaert, Antwerp/Leverkusen  
Manufacturers of Photographic Products.  
Made by : THE NEW INDIA INDUSTRIES LTD., Baroda - Bombay

1967  
Click III  
by Abeer Gupta

**filmindia**

10th anniversary homage

Sponsored by:

**THE TASTE OF YOUR TONGUE  
IS PACKED IN THIS BOTTLE**



**Q. BABURAO PATIL (BABURAO PATEL TO THOSE WHO KNOW ME FROM DAYS PRIOR TO MONOPOLY OF A CERTAIN KIND) WILL BE THE FIRST FILM CRITIC IN CINEMA'S BRIEF HISTORY TO RETRACT HIS REVIEW. KAGAZ KE PHOOL IS NOT A DISMAL, INCOHERENT FUNERAL-PACED PICTURE. IT IS REMARKABLE. THERE ARE MORE THINGS REMARKABLE ABOUT IT THAN JUST THAT IT IS THE FIRST INDIAN PICTURE TO BE MADE IN CINEMASCOPE. BUT I STILL INSIST ON CINEMASCOPE. A PROCESS DESIGNED TO PROVIDE AN IMAGE THAT HAS MORE THAN TWICE AS MUCH WIDTH AS HEIGHT. IS ONE WHICH SQUINT-EYED SPECTATORS CAN PERHAPS DO MORE JUSTICE TO THAN THOSE WITH NORMAL EYES.**

**Q. ARE THERE ANY RAW-FILM MANUFACTURERS IN INDIA?**  
**A. NO. BUT WE HAVE DIRECTORS WHO EXPOSE THE FILM AND MAKE IT LOOK MORE RAW THAN EVER BEFORE.**

**Q. HOW MANY OF OUR ACTRESSES ARE VIRGINS?**  
**A. I DON'T KNOW MUCH ABOUT THE ACTRESSES BEING VIRGINS. THIS IS AN ENTIRE COMMODITY IN A MODERN WORLD AND YOU MAY FIND IT IN IDEAL SURROUNDINGS.**

# KAGAZ IN CINEMASCOPE KE PHOOL

१९६९      मई      MAY      1969

रविवार SUN	सोमवार MON	मंगलवार TUE	बुधवार WED	गुरुवार THU	शुक्रवार FRI	शनिवार SAT
३१ 31					१ 1	२ 2
३ 3	४ 4	५ 5	६ 6	७ 7	८ 8	९ 9
१० 10	११ 11	१२ 12	१३ 13	१४ 14	१५ 15	१६ 16
१७ 17	१८ 18	१९ 19	२० 20	२१ 21	२२ 22	२३ 23
२४ 24	२५ 25	२६ 26	२७ 27	२८ 28	२९ 29	३० 30

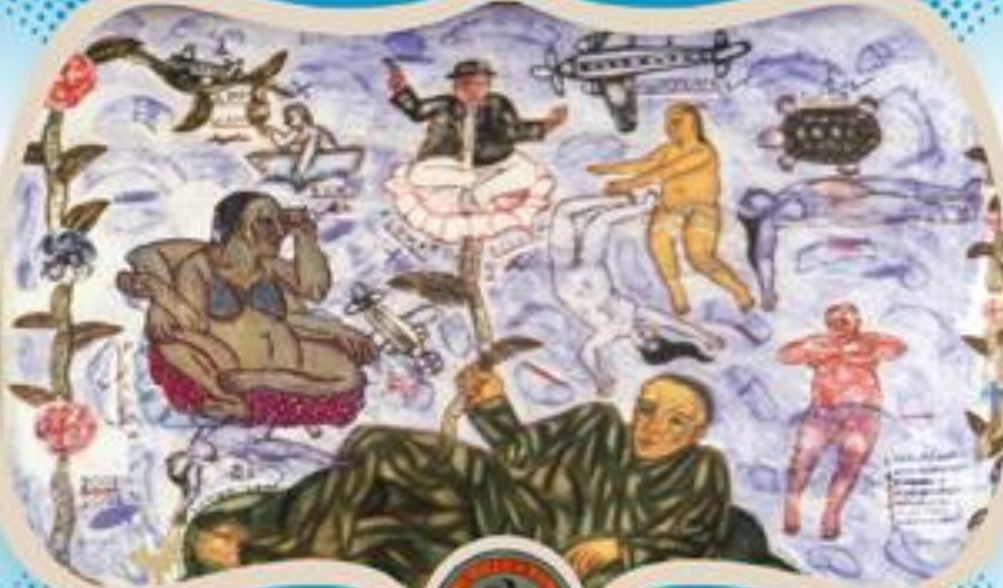
काغذ کے پھول

THE TASTE OF YOUR TONGUE  
IS PACKED IN THIS BOTTLE



1969  
Chilli Pickle  
by Mamta Murthy

Leading supplier of fabrics to the film industry: from Sant Tukaram to Sholay.



**LAXMI**



**MILLS**

1972

January	February	March	April
1 2 3 4 5 6 7 8 9 10 11 12 13 14 15 16 17 18 19 20 21 22 23 24 25 26 27 28 29 30 31	1 2 3 4 5 6 7 8 9 10 11 12 13 14 15 16 17 18 19 20 21 22 23 24 25 26 27 28 29	1 2 3 4 5 6 7 8 9 10 11 12 13 14 15 16 17 18 19 20 21 22 23 24 25 26 27 28 29 30 31	1 2 3 4 5 6 7 8 9 10 11 12 13 14 15 16 17 18 19 20 21 22 23 24 25 26 27 28 29 30
May	June	July	August
1 2 3 4 5 6 7 8 9 10 11 12 13 14 15 16 17 18 19 20 21 22 23 24 25 26 27 28 29 30 31	1 2 3 4 5 6 7 8 9 10 11 12 13 14 15 16 17 18 19 20 21 22 23 24 25 26 27 28 29 30	1 2 3 4 5 6 7 8 9 10 11 12 13 14 15 16 17 18 19 20 21 22 23 24 25 26 27 28 29 30 31	1 2 3 4 5 6 7 8 9 10 11 12 13 14 15 16 17 18 19 20 21 22 23 24 25 26 27 28 29 30 31
September	October	November	December
1 2 3 4 5 6 7 8 9 10 11 12 13 14 15 16 17 18 19 20 21 22 23 24 25 26 27 28 29 30	1 2 3 4 5 6 7 8 9 10 11 12 13 14 15 16 17 18 19 20 21 22 23 24 25 26 27 28 29 30 31	1 2 3 4 5 6 7 8 9 10 11 12 13 14 15 16 17 18 19 20 21 22 23 24 25 26 27 28 29 30	1 2 3 4 5 6 7 8 9 10 11 12 13 14 15 16 17 18 19 20 21 22 23 24 25 26 27 28 29 30 31

We clothe all people irrespective of Religion, Caste, Creed, Gender and Occupation

1972  
Laxmi Mills  
by Arpita Singh  
Designed by Kevat Padh

1973



*वमसो मा न्योतिर्गमय*  
**HELP LIGHT THE WORLD**

JANUARY	FEBRUARY	MARCH	APRIL	MAY	JUNE
S M T W T F S 1 2 3 4 5 6 7 8 9 10 11 12 13 14 15 16 17 18 19 20 21 22 23 24 25 26 27 28 29 30 31	S M T W T F S 1 2 3 4 5 6 7 8 9 10 11 12 13 14 15 16 17 18 19 20 21 22 23 24 25 26 27 28	S M T W T F S 1 2 3 4 5 6 7 8 9 10 11 12 13 14 15 16 17 18 19 20 21 22 23 24 25 26 27 28 29 30 31	S M T W T F S 1 2 3 4 5 6 7 8 9 10 11 12 13 14 15 16 17 18 19 20 21 22 23 24 25 26 27 28 29 30	S M T W T F S 1 2 3 4 5 6 7 8 9 10 11 12 13 14 15 16 17 18 19 20 21 22 23 24 25 26 27 28 29 30 31	S M T W T F S 1 2 3 4 5 6 7 8 9 10 11 12 13 14 15 16 17 18 19 20 21 22 23 24 25 26 27 28 29 30 31
JULY	AUGUST	SEPTEMBER	OCTOBER	NOVEMBER	DECEMBER
S M T W T F S 1 2 3 4 5 6 7 8 9 10 11 12 13 14 15 16 17 18 19 20 21 22 23 24 25 26 27 28 29 30 31	S M T W T F S 1 2 3 4 5 6 7 8 9 10 11 12 13 14 15 16 17 18 19 20 21 22 23 24 25 26 27 28 29 30 31	S M T W T F S 1 2 3 4 5 6 7 8 9 10 11 12 13 14 15 16 17 18 19 20 21 22 23 24 25 26 27 28 29	S M T W T F S 1 2 3 4 5 6 7 8 9 10 11 12 13 14 15 16 17 18 19 20 21 22 23 24 25 26 27 28 29 30 31	S M T W T F S 1 2 3 4 5 6 7 8 9 10 11 12 13 14 15 16 17 18 19 20 21 22 23 24 25 26 27 28 29 30	S M T W T F S 1 2 3 4 5 6 7 8 9 10 11 12 13 14 15 16 17 18 19 20 21 22 23 24 25 26 27 28 29 30 31

**KHETWADI LIGHT HOUSE**

Leading Exporters and Suppliers of Tube Lights

We also supply for Lalbaugcha Raja, Chira Bazaar Navaratri Pandal,  
 Mahim Urs and Bandra Fair

1973  
 Janta Watch Repairing  
 by Bhupen Khakkar  
 Designed by Amit Roy

**BHARAT BULLDOGS**  
**YUVA MANDAL**

देश का बोझ उठाओ  
उस पर बोझ ना बनो

**मजबूत शरीर - मजबूत भारत**  
WEIGHT LIFTING KUSTI BODY BUILDING

**1975**
**1975**

January		February		March		April		May		June			
S	3 10 17 24 31	S	7 14 21 28	S	7 14 21 28	S	4 11 18 25	S	2 9 16 23 30	S	6 13 20 27		
M	4 11 18 25	M	1 8 15 22 29	M	1 8 15 22 29	M	5 12 19 26	M	3 10 17 24 31	M	7 14 21 28		
Tu	5 12 19 26	Tu	2 9 16 23 30	Tu	2 9 16 23 30	Tu	6 13 20 27	Tu	1 8 15 22 29	Tu	1 8 15 22 29		
W	6 13 20 27	W	3 10 17 24 31	W	3 10 17 24 31	W	7 14 21 28	W	2 9 16 23 30	W	2 9 16 23 30		
Th	7 14 21 28	Th	4 11 18 25	Th	4 11 18 25	Th	1 8 15 22 29	Th	5 12 19 26	Th	3 10 17 24		
F	8 15 22 29	F	5 12 19 26	F	5 12 19 26	F	2 9 16 23 30	F	7 14 21 28	F	4 11 18 25		
S	9 16 23 30	S	6 13 20 27	S	6 13 20 27	S	3 10 17 24	S	1 8 15 22 29	S	6 13 20 27		
July		August		September		October		November		December			
S	4 11 18 25	S	2 9 16 23 30	S	6 13 20 27	S	4 11 18 25	S	1 8 15 22 29	S	6 13 20 27	S	6 13 20 27
M	5 12 19 26	M	3 10 17 24 31	M	7 14 21 28	M	5 12 19 26	M	2 9 16 23 30	M	7 14 21 28	M	7 14 21 28
Tu	6 13 20 27	Tu	4 11 18 25	Tu	1 8 15 22 29	Tu	6 13 20 27	Tu	3 10 17 24	Tu	1 8 15 22 29	Tu	1 8 15 22 29
W	7 14 21 28	W	5 12 19 26	W	2 9 16 23 30	W	7 14 21 28	W	4 11 18 25	W	2 9 16 23 30	W	2 9 16 23 30
Th	1 8 15 22 29	Th	6 13 20 27	Th	3 10 17 24	Th	3 10 17 24	Th	1 8 15 22 29	Th	5 12 19 26	Th	3 10 17 24 31
F	2 9 16 23 30	F	7 14 21 28	F	4 11 18 25	F	4 11 18 25	F	2 9 16 23 30	F	6 13 20 27	F	4 11 18 25
S	3 10 17 24 31	S	1 8 15 22 29	S	5 12 19 26	S	3 10 17 24 31	S	7 14 21 28	S	7 14 21 28	S	6 12 19 26

1975  
Youth Power  
by Sudhir Patwardhan

"Why cry over  
spilt milk?"

Vishwamitra could create alternate worlds  
but he could not face the harsh truth of reality.  
This was the beginning of the Tragic Tale of Shakuntala.



Imported from Los Angeles



# Trojan Horse

## Rubbers and Condoms

I work hard, I want full satisfaction.  
For complete satisfaction, Trojan Horses.

# 1975

Trojan Rubbers and Condoms.  
For safety and full satisfaction for males only.  
Colorful and durable. Kamurok.  
made from the finest latex from Sri Lanka.

### January

S	M	Tu	W	Th	F	S
					1	2
3	4	7	8	9	10	11
12	13	14	15	16	17	18
19	20	21	22	23	24	25
26	27	28	29	30	31	

### July

S	M	Tu	W	Th	F	S
			1	2	3	4
6	7	8	9	10	11	12
13	14	15	16	17	18	19
20	21	22	23	24	25	26
27	28	29	30	31		

### February

S	M	Tu	W	Th	F	S
						1
2	3	4	5	6	7	8
9	10	11	12	13	14	15
16	17	18	19	20	21	22
23	24	25	26	27	28	

### August

S	M	Tu	W	Th	F	S
						1
2	3	4	5	6	7	8
9	10	11	12	13	14	15
16	17	18	19	20	21	22
23	24	25	26	27	28	29
30	31					

### March

S	M	Tu	W	Th	F	S
						1
2	3	4	5	6	7	8
9	10	11	12	13	14	15
16	17	18	19	20	21	22
23	24	25	26	27	28	29
30	31					

### September

S	M	Tu	W	Th	F	S
			1	2	3	4
5	6	7	8	9	10	11
12	13	14	15	16	17	18
19	20	21	22	23	24	25
26	27	28	29	30		

### April

S	M	Tu	W	Th	F	S
						1
2	3	4	5	6	7	8
9	10	11	12	13	14	15
16	17	18	19	20	21	22
23	24	25	26	27	28	29
30						

### October

S	M	Tu	W	Th	F	S
						1
2	3	4	5	6	7	8
9	10	11	12	13	14	15
16	17	18	19	20	21	22
23	24	25	26	27	28	29
30	31					

### May

S	M	Tu	W	Th	F	S
						1
2	3	4	5	6	7	8
9	10	11	12	13	14	15
16	17	18	19	20	21	22
23	24	25	26	27	28	29
30	31					

### November

S	M	Tu	W	Th	F	S
						1
2	3	4	5	6	7	8
9	10	11	12	13	14	15
16	17	18	19	20	21	22
23	24	25	26	27	28	29
30						

### June

S	M	Tu	W	Th	F	S
						1
2	3	4	5	6	7	8
9	10	11	12	13	14	15
16	17	18	19	20	21	22
23	24	25	26	27	28	29
30						

### December

S	M	Tu	W	Th	F	S
						1
2	3	4	5	6	7	8
9	10	11	12	13	14	15
16	17	18	19	20	21	22
23	24	25	26	27	28	29
30	31					

For more information contact your nearest family planning centre  
All informations will be kept confidential

1975  
Vishwamitra Condoms  
by Kamal Swaroop

# Bombay Welders and Hardware Manufacturers Association

१९७६

बॉम्बे वेल्डर और हार्डवेयर कारीगर समिती

1976

<p><b>January</b></p> 	<p><b>February</b></p> 	<p><b>March</b></p> 
<p>Discipline अनुशासन</p>	<p>Emancipation मुक्ति</p>	<p>Modernisation आधुनिकीकरण</p>
<p><b>April</b></p> 	<p><b>May</b></p> 	<p><b>June</b></p> 
<p>Order नियम</p>	<p>Commitment जिम्मेदारी</p>	<p>Reform सुधारवा</p>
<p><b>July</b></p> 	<p><b>August</b></p> 	<p><b>Spetember</b></p> 
<p>Accountibility जबाबदारी</p>	<p>Censorship नियत्रण</p>	<p>Youthpower युवाशक्ति</p>
<p><b>October</b></p> 	<p><b>November</b></p> 	<p><b>December</b></p> 

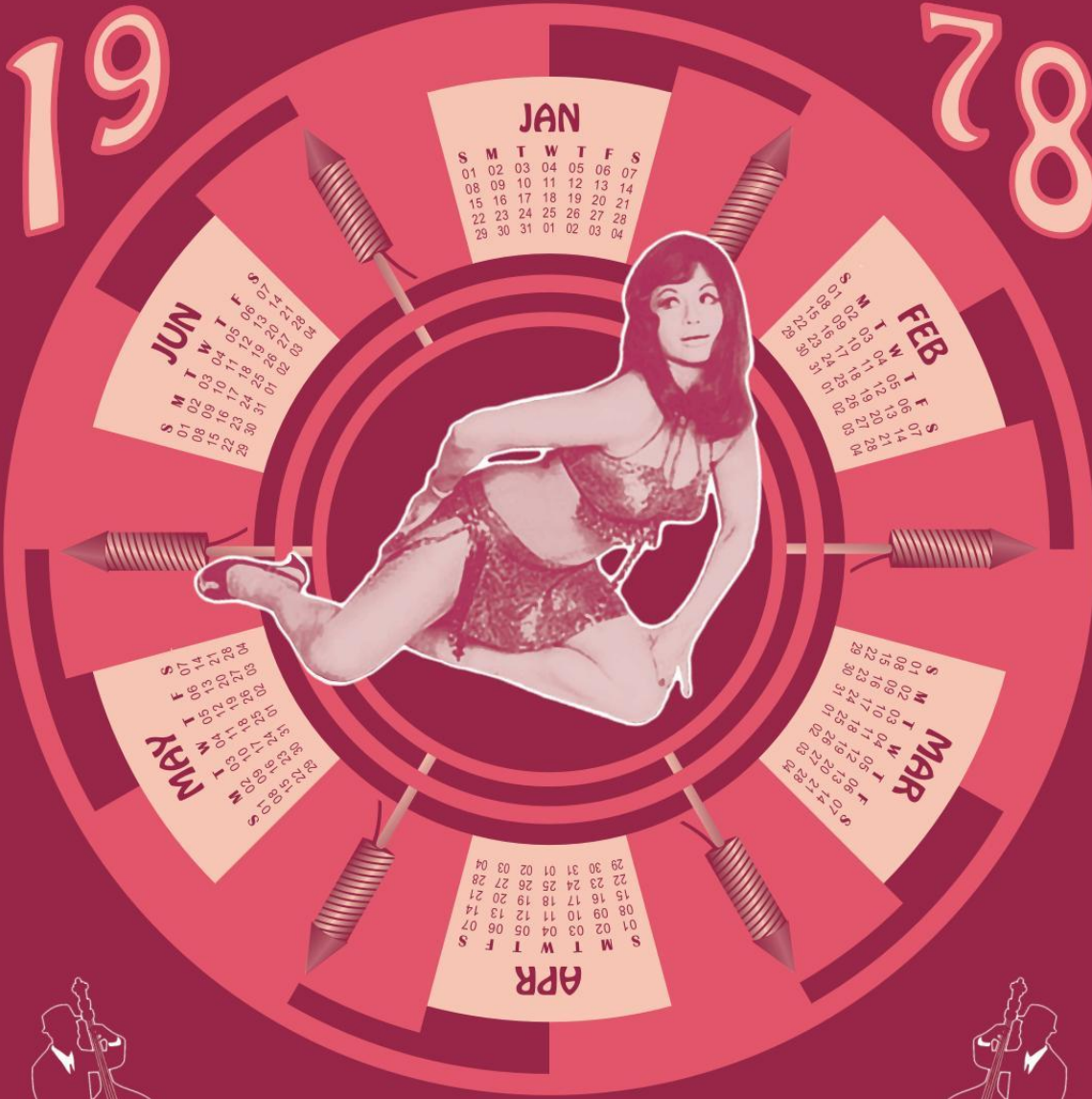
PRINTED AT- ENGINEER ENTERPRISE

1976  
Democracy  
by Nalini Malani



19

78



**JAN**

S	M	T	W	T	F	S
01	02	03	04	05	06	07
08	09	10	11	12	13	14
15	16	17	18	19	20	21
22	23	24	25	26	27	28
29	30	31	01	02	03	04

**JUN**

S	M	T	W	T	F	S
01	02	03	04	05	06	07
08	09	10	11	12	13	14
15	16	17	18	19	20	21
22	23	24	25	26	27	28
29	30	31	01	02	03	04

**FEB**

S	M	T	W	T	F	S
01	02	03	04	05	06	07
08	09	10	11	12	13	14
15	16	17	18	19	20	21
22	23	24	25	26	27	28
29	01	02	03	04	05	06

**MAY**

S	M	T	W	T	F	S
01	02	03	04	05	06	07
08	09	10	11	12	13	14
15	16	17	18	19	20	21
22	23	24	25	26	27	28
29	30	31	01	02	03	04

**MAR**

S	M	T	W	T	F	S
01	02	03	04	05	06	07
08	09	10	11	12	13	14
15	16	17	18	19	20	21
22	23	24	25	26	27	28
29	30	31	01	02	03	04

**APR**

S	M	T	W	T	F	S
01	02	03	04	05	06	07
08	09	10	11	12	13	14
15	16	17	18	19	20	21
22	23	24	25	26	27	28
29	30	31	01	02	03	04



# H-BOMB

FIRECRACKERS Pvt. Ltd. BOMBAY - SHIVAKASI

1978  
H Bomb  
by Vishal Rawlley

JAN

S	M	T	W	T	F	S
01	02	03	04	05	06	07
08	09	10	11	12	13	14
15	16	17	18	19	20	21
22	23	24	25	26	27	28
29	30	31	01	02	03	04

FEB

S	M	T	W	T	F	S
01	02	03	04	05	06	07
08	09	10	11	12	13	14
15	16	17	18	19	20	21
22	23	24	25	26	27	28
29	30	31	01	02	03	04

MAR

S	M	T	W	T	F	S
01	02	03	04	05	06	07
08	09	10	11	12	13	14
15	16	17	18	19	20	21
22	23	24	25	26	27	28
29	30	31	01	02	03	04

APR

S	M	T	W	T	F	S
01	02	03	04	05	06	07
08	09	10	11	12	13	14
15	16	17	18	19	20	21
22	23	24	25	26	27	28
29	30	31	01	02	03	04

MAY

S	M	T	W	T	F	S
01	02	03	04	05	06	07
08	09	10	11	12	13	14
15	16	17	18	19	20	21
22	23	24	25	26	27	28
29	30	31	01	02	03	04

JUN

S	M	T	W	T	F	S
01	02	03	04	05	06	07
08	09	10	11	12	13	14
15	16	17	18	19	20	21
22	23	24	25	26	27	28
29	30	31	01	02	03	04

१९८०



सुपीमो वैन्ड  
मर्दे की पहचान

**SUPREMO**

लुगीं ★ बनियान



JUL

S	M	T	W	T	F	S
01	02	03	04	05	06	07
08	09	10	11	12	13	14
15	16	17	18	19	20	21
22	23	24	25	26	27	28
29	30	31	01	02	03	04

AUG

S	M	T	W	T	F	S
01	02	03	04	05	06	07
08	09	10	11	12	13	14
15	16	17	18	19	20	21
22	23	24	25	26	27	28
29	30	31	01	02	03	04

SEP

S	M	T	W	T	F	S
01	02	03	04	05	06	07
08	09	10	11	12	13	14
15	16	17	18	19	20	21
22	23	24	25	26	27	28
29	30	31	01	02	03	04

OCT

S	M	T	W	T	F	S
01	02	03	04	05	06	07
08	09	10	11	12	13	14
15	16	17	18	19	20	21
22	23	24	25	26	27	28
29	30	31	01	02	03	04

NOV

S	M	T	W	T	F	S
01	02	03	04	05	06	07
08	09	10	11	12	13	14
15	16	17	18	19	20	21
22	23	24	25	26	27	28
29	30	31	01	02	03	04

DEC

S	M	T	W	T	F	S
01	02	03	04	05	06	07
08	09	10	11	12	13	14
15	16	17	18	19	20	21
22	23	24	25	26	27	28
29	30	31	01	02	03	04

1980  
Bachhan Lungi  
by Vishal Rawlley



Props & Costumes  
Exhibition  
**BALGANDHARVA**

at

The Prince of Wales Museum of Western India

K Dubash Marg, Kala Ghoda, Fort Bombay, Maharashtra 400023



1980

To Commemorate the Centenary of Marathi Sangeet Natak

MAY	S	म	७	७	७	७	७	S	S	म	७	७	७	७	७	७	S	JUN
	4	5	5	6	8	9	10	1	2	3	4	5	6	7	8	9	10	
11	12	13	14	15	16	17	18	19	20	21	22	23	24	25	26	27	28	
25	26	27	28	29	30	31	29	30										

1980  
Sangeet Natak  
by B V Suresh

बॉस का ऑर्डर... घर की टेन्शन,  
बेटे की पढ़ाई... 8:40 की लोकल

January

1

1980

Aap ko chahiye  
**CITY LIFE**

ek ghunt mein thakaan gayab



1980  
City Life  
by Sashikant Thavudoz

# 1981

1981



Tuesday

26

1981



1981  
Bad Girls  
by Mithu Sen



OWN A COLOUR TV  
INDIA IS NO LONGER B/W

1983



MON	TUE	WED	THU	FRI	SAT	SUN
					01	02
03	04	05	06	07	08	09
10	11	12	13	14	15	16
17	18	19	20	21	22	23
24	25	26	27	28	29	30
31						

1983  
Colour no Bar  
by Shilpa Gupta

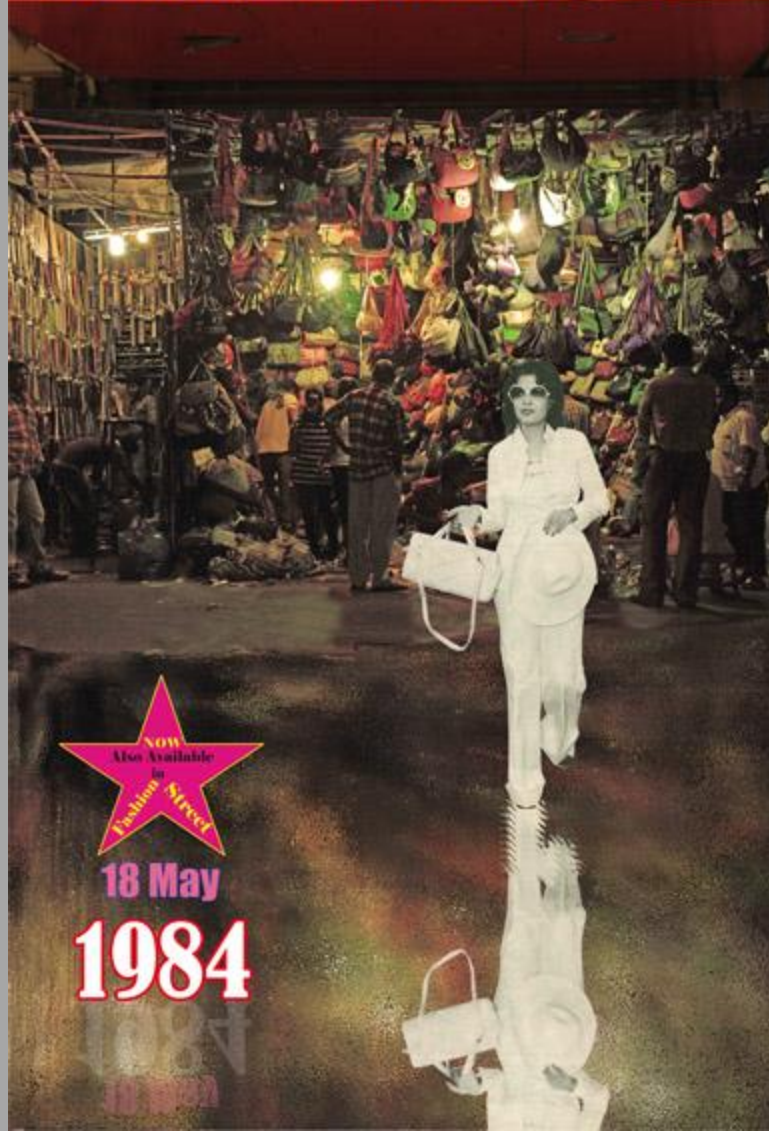
# DHARAVI BAG HOUSE



Sitaron ki asli pasand



Retail: Bandra Linking Road,  
Abdul Rehman Street, M G Road Baroda



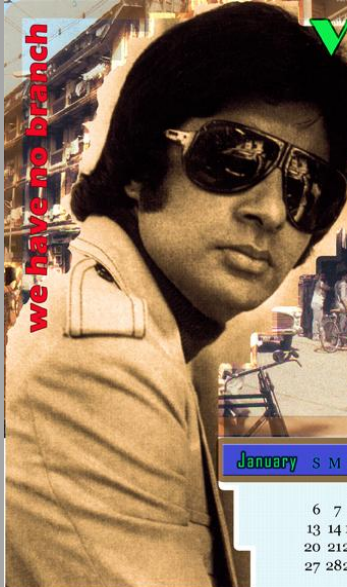
18 May

1984

1984  
Bag House  
by Hema Upadhyay

# Vijay Acting Classes

we have no branch



4th Floor, Munsahi House  
a Baburno Pithar Marg  
Near Ranjit Studios  
Dadar (West)

## 1985

January	SMTWTFSS	February	SMTWTFSS	March	SMTWTFSS
	1 2 3 4 5		1 2	31	1 2
6 7 8	9 10 11 12	3 4 5 6 7 8 9		3 4 5 6 7 8 9	
13 14 15 16 17 18 19		10 11 12 13 14 15 16		10 11 12 13 14 15 16	
20 21 22 23 24 25 26		17 18 19 20 21 22 23		17 18 19 20 21 22 23	
27 28 29 30 31		24 25 26 27 28		24 25 26 27 28 29 30	

# Vijay Acting Classes

we have no branch



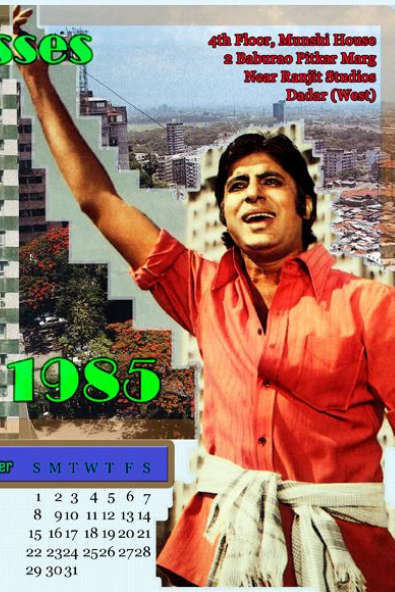
4th Floor, Munsahi House  
a Baburno Pithar Marg  
Near Ranjit Studios  
Dadar (West)

## 1985

April	SMTWTFSS	May	SMTWTFSS	June	SMTWTFSS
	1 2 3 4 5 6		1 2 3 4	30	1
7 8 9 10 11 12 13		5 6 7 8 9 10 11		2 3 4 5 6 7 8	
14 15 16 17 18 19 20		12 13 14 15 16 17 18		9 10 11 12 13 14 15	
21 22 23 24 25 26 27		19 20 21 22 23 24 25		16 17 18 19 20 21 22	
28 29 30		26 27 28 29 30 31		23 24 25 26 27 28 29	

# Vijay Acting Classes

we have no branch



4th Floor, Munsahi House  
a Baburno Pithar Marg  
Near Ranjit Studios  
Dadar (West)

## 1985

July	SMTWTFSS	August	SMTWTFSS	September	SMTWTFSS
	1 2 3 4 5 6		1 2 3	1 2 3 4 5 6 7	
7 8 9 10 11 12 13		4 5 6 7 8 9 10		8 9 10 11 12 13 14	
14 15 16 17 18 19 20		11 12 13 14 15 16 17		15 16 17 18 19 20 21	
21 22 23 24 25 26 27		18 19 20 21 22 23 24		22 23 24 25 26 27 28	
28 29 30 31		25 26 27 28 29 30 31		29 30 31	

# Vijay Acting Classes

we have no branch



4th Floor, Munsahi House  
a Baburno Pithar Marg  
Near Ranjit Studios  
Dadar (West)

## 1985

October	SMTWTFSS	November	SMTWTFSS	December	SMTWTFSS
	1 2 3 4 5		1 2	1 2 3 4 5 6 7	
6 7 8 9 10 11 12		3 4 5 6 7 8 9		8 9 10 11 12 13 14	
13 14 15 16 17 18 19		10 11 12 13 14 15 16		15 16 17 18 19 20 21	
20 21 22 23 24 25 26		17 18 19 20 21 22 23		22 23 24 25 26 27 28	
27 28 29 30 31		24 25 26 27 28 29 30		29 30 31	

1985  
Brand Vijay  
by Abeer Gupta





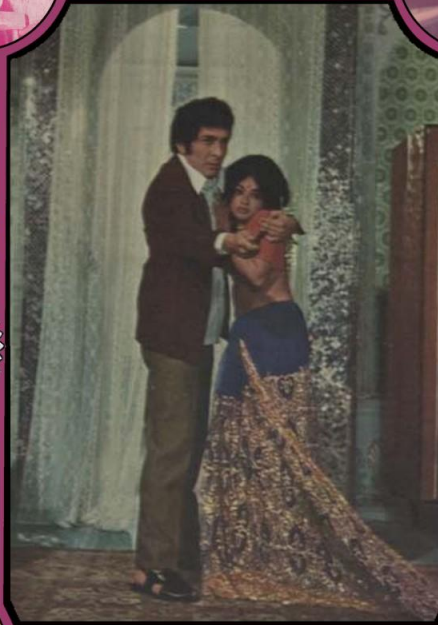


# भूमीकन्या

## Daughter of the Soil Self Defense Moves



### धैर्य हीच खरी संपत्ती दे दनादन



19



89

यह  
इज़ात  
का  
सवाल है

घर असो  
वा रस्ता  
राज असो  
वा गर्दी



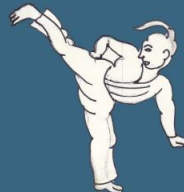
We  
have  
Branches  
from

Churchgate  
to  
Chinchpokli  
Bhendi Bazaar  
to  
Bhayandar



फक्त छियांसाठी

१९८९



जानेवारी	फेब्रुवारी	मार्च
१ २ ३ ४ ५ ६ ७	१ २ ३ ४	१ २ ३ ४
८ ९ १० ११ १२ १३ १४	५ ६ ७ ८ ९ १० ११	५ ६ ७ ८ ९ १० ११
१५ १६ १७ १८ १९ २० २१	१२ १३ १४ १५ १६ १७ १८	१२ १३ १४ १५ १६ १७ १८
२२ २३ २४ २५ २६ २७ २८	१९ २० २१ २२ २३ २४ २५	१९ २० २१ २२ २३ २४ २५
२९ ३० ३१	२६ २७ २८	२६ २७ २८ २९ ३० ३१



1989  
Self Defense  
by Shakuntala Kulkarni



એડવાન્સ બુકીંગ દરેક સિનેમાઘર પરથી સવારે

૧૦ થી ૧૧:૩૦

મનોરંજન ની દુનિયા નો બેતાજ બાદલાહ



# શિને નિર્ણય

ઑગષ્ટ ૧૯૯૦

૧૯૧૧

ભાદરવો-આસો

૮

૨		૫		૧૮	૨૬
સો		૬		૨૦	૨૭
મં		૭		૨૧	૨૮
બુ		૮		૨૨	૨૯
ગુ		૯		૨૩	૩૦
શુ					
શ		૧૧		૧૯	૨૫

સ્વચ્છતાનીયોગ  
 ભારત નો ગૌરવ પોથી  
 પાવટી પંચાત  
 વાઠિવાત નવાપૂલી  
 શનિ  
 રવિવાર  
 સુક્રવાર

આપને તથા આવાલા શુભ પ્રસંગે મનનગમલા જીતો તથા જીતોઈન ને આલાવો- ફોન નં. ૦૨૨-૭૮૬ ૭૮૬ (પેલા ની સેવાદેવર બેટાવાન્કા મા કાવિ)

1990  
 Dates with Stars  
 by Sukhdev Rathod

# RAJHANS

## SHOE STALL

Bombay



### January

S	M	T	W	T	F	S
			1	2	3	4
5	6	7	8	9	10	11
12	13	14	15	16	17	18
19	20	21	22	23	24	25
26	27	28	29	30	31	

### May

S	M	T	W	T	F	S
					1	2
3	4	5	6	7	8	9
10	11	12	13	14	15	16
17	18	19	20	21	22	23
24	25	26	27	28	29	30
31						

### February

S	M	T	W	T	F
2	3	4	5	6	7
8	9	10	11	12	13
14	15	16	17	18	19
20	21	22	23	24	25
26	27	28	29		

### June

S	M	T	W	T	F	S
	1	2	3	4	5	6
7	8	9	10	11	12	13
14	15	16	17	18	19	20
21	22	23	24	25	26	27
28	29	30				

19

92



### March

S	M	T	W	T	F	S
1	2	3	4	5	6	7
8	9	10	11	12	13	14
15	16	17	18	19	20	21
22	23	24	25	26	27	28
29	30	31				

### July

S	M	T	W	T	F	S
				1	2	3
4	5	6	7	8	9	10
11	12	13	14	15	16	17
18	19	20	21	22	23	24
25	26	27	28	29	30	31



तुम कब आओगे

1992  
Tum kab Aoge  
by Meera Devidayal

<p><b>January</b></p> <p>Su Mo Tu We Th Fr Sa</p> <p>1 2 3 4 5 6</p> <p>7 8 9 10 11 12 13</p> <p>14 15 16 17 18 19 20</p> <p>21 22 23 24 25 26 27</p> <p>28 29 30 31</p>	<p>NO. 1993</p>	<p><b>February</b></p> <p>Su Mo Tu We Th Fr Sa</p> <p>1 2 3</p> <p>4 5 6 7 8 9 10</p> <p>11 12 13 14 15 16 17</p> <p>18 19 20 21 22 23 24</p> <p>25 26 27 28 29</p>
<p><b>March</b></p> <p>Su Mo Tu We Th Fr Sa</p> <p>1 2 3 4</p> <p>5 6 7 8 9</p> <p>10 11 12 13 14 15 16</p> <p>17 18 19 20 21 22 23</p> <p>24 25 26 27 28 29 30</p> <p>31</p>	<p>NO. 1994</p>	<p><b>April</b></p> <p>Su Mo Tu We Th Fr Sa</p> <p>1 2 3 4 5 6</p> <p>7 8 9 10 11 12 13</p> <p>14 15 16 17 18 19 20</p> <p>21 22 23 24 25 26 27</p> <p>28 29 30</p>
<p><b>May</b></p> <p>Su Mo Tu We Th Fr Sa</p> <p>1 2 3 4</p> <p>5 6 7 8 9 10 11</p> <p>12 13 14 15 16 17 18</p> <p>19 20 21 22 23 24 25</p> <p>26 27 28 29 30 31</p>	<p>NO. 1993</p>	<p><b>June</b></p> <p>Su Mo Tu We Th Fr Sa</p> <p>1</p> <p>2 3 4 5 6 7 8</p> <p>9 10 11 12 13 14 15</p> <p>16 17 18 19 20 21 22</p> <p>23 24 25 26 27 28 29</p> <p>30</p>
<p><b>July</b></p> <p>Su Mo Tu We Th Fr Sa</p> <p>1 2 3 4 5 6</p> <p>7 8 9 10 11 12 13</p> <p>14 15 16 17 18 19 20</p> <p>21 22 23 24 25 26 27</p> <p>28 29 30 31</p>	<p>NO. 1994</p>	<p><b>August</b></p> <p>Su Mo Tu We Th Fr Sa</p> <p>1 2 3</p> <p>4 5 6 7 8 9 10</p> <p>11 12 13 14 15 16 17</p> <p>18 19 20 21 22 23 24</p> <p>25 26 27 28 29 30 31</p>
<p><b>September</b></p> <p>Su Mo Tu We Th Fr Sa</p> <p>1 2 3 4 5 6 7</p> <p>8 9 10 11 12 13 14</p> <p>15 16 17 18 19 20 21</p> <p>22 23 24 25 26 27 28</p> <p>29 30</p>	<p>NO. 1991</p>	<p><b>October</b></p> <p>Su Mo Tu We Th Fr Sa</p> <p>1 2 3 4 5</p> <p>6 7 8 9 10 11 12</p> <p>13 14 15 16 17 18 19</p> <p>20 21 22 23 24 25 26</p> <p>27 28 29 30 31</p>
<p><b>November</b></p> <p>Su Mo Tu We Th Fr Sa</p> <p>1 2 3 4</p> <p>5 6 7 8 9</p> <p>10 11 12 13 14 15 16</p> <p>17 18 19 20 21 22 23</p> <p>24 25 26 27 28 29 30</p>	<p>NO. 1994</p>	<p><b>December</b></p> <p>Su Mo Tu We Th Fr Sa</p> <p>1 2 3 4 5 6 7</p> <p>8 9 10 11 12 13 14</p> <p>15 16 17 18 19 20 21</p> <p>22 23 24 25 26 27 28</p> <p>29 30 31</p>

**D.d.l.d. Chasma Company**

*"Glasses that make adventure turn into romance, Kashmir into Switzerland"*

1995

1995  
Swiss Kashmir  
by Chhatrapati Dutta

# काया कल्प

Be the change you want



Kaya-Kalp  
A Trans-India  
enterprise



Uncle → Aunty  
Victoria → Chatrapati  
Bombay → Mumbai

We change HIS-tory  
and HER story



Shakti  
Swasth  
Sundarta

1996  
Mixed Double  
by Chintan Upadhayay



# DISCO MANIA

THE NO.1 DANCE ACADEMY IN VIRAR.  
SPECIALISED IN INDIAN AND WESTERN BREAK DANCING.



INAUGURATED BY OUR OWN 'VIRAR KA CHOKRA'  
**GOVINDA**



WE DO NOT HAVE ANY BRANCHES.

GANESH OFFSET PRINTING PVT. LTD. © 3RD ROAD, LOWER PAREL, BOMBAY-400011, MAHARASHTRA.

JAN	S	M	T	W	T	F	S
			1	2	3	4	
	5	6	7	8	9	10	11
	12	13	14	15	16	17	18
	19	20	21	22	23	24	25
	26	27	28	29	30	31	

FEB	S	M	T	W	T	F	S
							1
	2	3	4	5	6	7	8
	9	10	11	12	13	14	15
	16	17	18	19	20	21	22
	23	24	25	26	27	28	

MAR	S	M	T	W	T	F	S
							1
	2	3	4	5	6	7	8
	9	10	11	12	13	14	15
	16	17	18	19	20	21	22
	23	24	25	26	27	28	29
	30	31					

APR	S	M	T	W	T	F	S
			1	2	3	4	5
	6	7	8	9	10	11	12
	13	14	15	16	17	18	19
	20	21	22	23	24	25	26
	27	28	29	30			

MAY	S	M	T	W	T	F	S
						1	2
	3	4	5	6	7	8	9
	10	11	12	13	14	15	16
	17	18	19	20	21	22	23
	24	25	26	27	28	29	30
	31						

JUN	S	M	T	W	T	F	S
							1
	2	3	4	5	6	7	8
	9	10	11	12	13	14	15
	16	17	18	19	20	21	22
	23	24	25	26	27	28	29
	30						

JUL	S	M	T	W	T	F	S
			1	2	3	4	5
	6	7	8	9	10	11	12
	13	14	15	16	17	18	19
	20	21	22	23	24	25	26
	27	28	29	30	31		

AUG	S	M	T	W	T	F	S
			1	2	3	4	5
	6	7	8	9	10	11	12
	13	14	15	16	17	18	19
	20	21	22	23	24	25	26
	27	28	29	30	31		

SEP	S	M	T	W	T	F	S
							1
	2	3	4	5	6	7	8
	9	10	11	12	13	14	15
	16	17	18	19	20	21	22
	23	24	25	26	27	28	29
	30						

OCT	S	M	T	W	T	F	S
							1
	2	3	4	5	6	7	8
	9	10	11	12	13	14	15
	16	17	18	19	20	21	22
	23	24	25	26	27	28	29
	30	31					

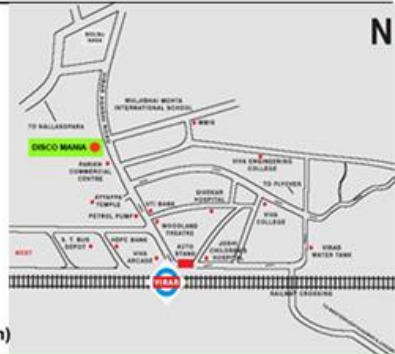
NOV	S	M	T	W	T	F	S
							1
	2	3	4	5	6	7	8
	9	10	11	12	13	14	15
	16	17	18	19	20	21	22
	23	24	25	26	27	28	29
	30						

DEC	S	M	T	W	T	F	S
			1	2	3	4	5
	6	7	8	9	10	11	12
	13	14	15	16	17	18	19
	20	21	22	23	24	25	26
	27	28	29	30	31		

# DISCO MANIA

THE NO.1 DANCE ACADEMY IN VIRAR.  
SPECIALISED IN INDIAN AND WESTERN BREAK DANCING.

WE ARE ON 15 MINS. WALK FROM VIRAR STATION.  
ADD: 12/B, SHIV GANGA APPT. NEXT TO PARIKH COMMERCIAL CENTER, ON YOUR WAY TO THE FAMOUSE AYYAPPA TEMPLE (PETROL PUMP BRANCH).  
VIRAR- WEST, MUMBAI. (open everyday from 9a.m. to 5p.m)

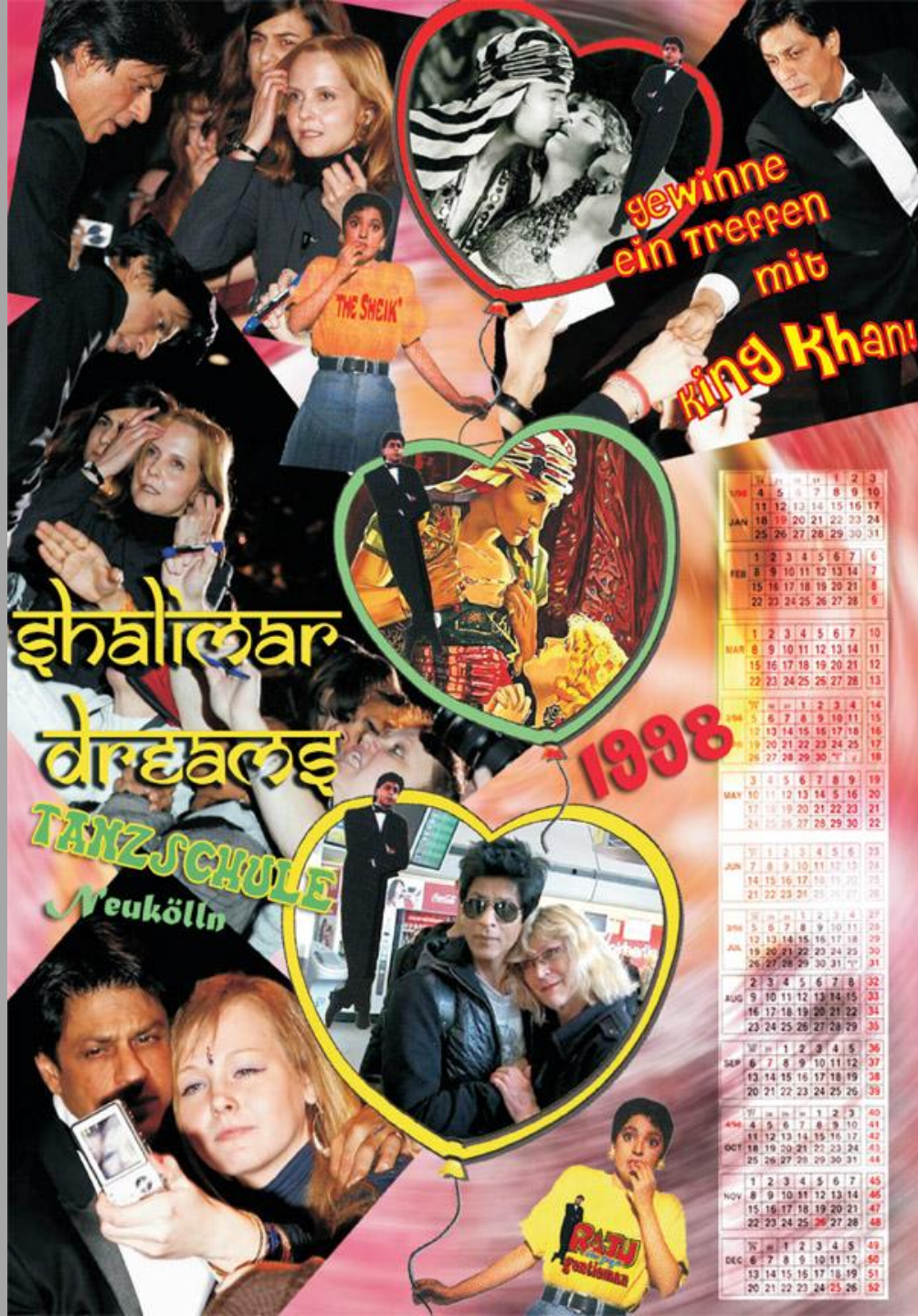


CHURCHGATE-VIRAR LOCAL  
YOUR OFFICIAL TRAVEL PARTNERS.

**CACHI UNDERWEAR**

YEH ARAM KA MAMLA HAI.

1997  
Virar ka Chokra  
by Shreyas Karle



इहोलीवर्  
 वर्षाकंड  
 TANZSCHULE  
 Neukölln

gewinne ein Treppen mit  
**King Khan**

**1998**

	30	31	1	2	3	
NOV	4	5	6	7	8	9
	10	11	12	13	14	15
	16	17	18	19	20	21
JAN	22	23	24	25	26	27
	28	29	30	31		
	1	2	3	4	5	6
FEB	7	8	9	10	11	12
	13	14	15	16	17	18
	19	20	21	22	23	24
	25	26	27	28	29	8
	1	2	3	4	5	6
MAR	7	8	9	10	11	12
	13	14	15	16	17	18
	19	20	21	22	23	24
	25	26	27	28	29	13
	1	2	3	4		
APR	5	6	7	8	9	10
	11	12	13	14	15	16
	17	18	19	20	21	22
	23	24	25	26	27	28
	29	30	31	4	5	6
MAY	7	8	9	10	11	12
	13	14	15	16	17	18
	19	20	21	22	23	24
	25	26	27	28	29	30
	31					
JUN	1	2	3	4	5	6
	7	8	9	10	11	12
	13	14	15	16	17	18
	19	20	21	22	23	24
	25	26	27	28	29	30
	31					
JUL	1	2	3	4	5	6
	7	8	9	10	11	12
	13	14	15	16	17	18
	19	20	21	22	23	24
	25	26	27	28	29	30
	31					
AUG	1	2	3	4	5	6
	7	8	9	10	11	12
	13	14	15	16	17	18
	19	20	21	22	23	24
	25	26	27	28	29	30
	31					
SEP	1	2	3	4	5	6
	7	8	9	10	11	12
	13	14	15	16	17	18
	19	20	21	22	23	24
	25	26	27	28	29	30
	31					
OCT	1	2	3	4	5	6
	7	8	9	10	11	12
	13	14	15	16	17	18
	19	20	21	22	23	24
	25	26	27	28	29	30
	31					
NOV	1	2	3	4	5	6
	7	8	9	10	11	12
	13	14	15	16	17	18
	19	20	21	22	23	24
	25	26	27	28	29	30
	31					
DEC	1	2	3	4	5	6
	7	8	9	10	11	12
	13	14	15	16	17	18
	19	20	21	22	23	24
	25	26	27	28	29	30
	31					

1998  
 King Khan  
 by Christina Zueck





1999



**YOU NEED NOT ROUGH IT OUT  
WE BRING THE PICTURE PERFECT  
NEWS TO YOUR LIVING ROOM**

1999

January

MON	TUE	WED	THU	FRI	SAT	SUN
				01	02	03
04	05	06	07	08	09	10
11	12	13	14	15	16	17
18	19	20	21	22	23	24
25	26	27	28	29	30	31

1999

24x7

by Shilpa Gupta



# मुलगी शिकली प्रगती झाली

महिला व बाल कल्याण विभाग, महाराष्ट्र

DAY	JANUARY	FEBRUARY	MARCH	APRIL
MON	3 10 17 24 31	7 14 21 28	6 13 27	3 10 17 24
TUE	4 11 18 25	1 8 15 22 29	7 14 21 28	4 11 18 25
WED	5 12 19	2 9 16 23	1 8 15 22 29	5 12 19 26
THU	6 13 20 27	3 17 24	2 9 16 23 30	6 13 20 27
FRI	7 14 21 28	4 11 18 25	3 10 24 31	7 28
SAT	1 8 15 22 29	5 12 19 26	4 11 18 25	8 15 22 29
DAY	MAY	JUNE	JULY	AUGUST
MON	8 15 22 29	5 12 19 26	3 10 17 24 31	7 14 21 28
TUE	2 9 16 23 30	6 13 20 27	4 11 18 25	1 8 29
WED	3 10 17 24 31	7 14 21 28	5 12 19 26	2 9 16 23 30
THU	4 11 18 25	1 8 22 29	6 13 20 27	3 10 17 24 31
FRI	5 12 19 26	2 9 16 23 30	7 14 21 28	4 11 18 25
SAT	6 13 20 27	3 10 17 24	8 15 22 29	5 12 19 26
DAY	SEPTEMBER	OCTOBER	NOVEMBER	DECEMBER
MON	4 11 18 25	9 16 23 30	6 13 20 27	4 11 18
TUE	5 12 19 26	3 10 17 24 31	7 14 21 28	5 12 19 26
WED	6 13 20	11 18 25	1 8 15 22 29	6 13 20 27
THU	7 14 21 28	19	2 9 16 23 30	7 14 21
FRI	1 8 15 22 29	13 20 27	3 10 17 24	1 8 15 22 29
SAT	2 9 16 23	14 21 28	4 11 25	2 9 16 23 30

### PUBLIC HOLIDAY LIST

9th Jan	18th Feb	15th June	Fathima D. diwan
23rd Jan	Nata's Birthday	15th Aug	Independence Day
26th Jan	Republic Day	22nd Aug	Jainmastotsava
10th Feb	Saraswati Pooja	27th Sept	Mahatya
17th March	14th-Zohra	30th Sept	1/2 Yearly Bank Closing
20th March	Dol Jatra	2nd Oct	Gandhi's Birthday
1st April	Yearly Bank Closing	4th Oct	Dussehra
14th April	Bengali New Year	12th Oct	Laxmapuja
16th April	Muharam	26th Oct	Kumjoka
31st April	Good Friday	11th Nov	Gautam's Birthday
1st May	May Day	25th Dec	X-mas Day
		28th Dec	14th Feb

### MILENIUM YEAR 2000

### महाराष्ट्र शासनाची गौरवशाली ४० वर्षे

Train No.	From	To	Class	Rate
2111	Dahisar	Mumbai	1A	18 15
3003	Mumbai	Mumbai	1A	20 25
3015	Mumbai	Mumbai	1A	20 25
3027	Mumbai	Mumbai	1A	20 25
3039	Mumbai	Mumbai	1A	20 25
3051	Mumbai	Mumbai	1A	20 25
3063	Mumbai	Mumbai	1A	20 25
3075	Mumbai	Mumbai	1A	20 25
3087	Mumbai	Mumbai	1A	20 25
3099	Mumbai	Mumbai	1A	20 25
3111	Mumbai	Mumbai	1A	20 25
3123	Mumbai	Mumbai	1A	20 25
3135	Mumbai	Mumbai	1A	20 25
3147	Mumbai	Mumbai	1A	20 25
3159	Mumbai	Mumbai	1A	20 25
3171	Mumbai	Mumbai	1A	20 25
3183	Mumbai	Mumbai	1A	20 25
3195	Mumbai	Mumbai	1A	20 25
3207	Mumbai	Mumbai	1A	20 25
3219	Mumbai	Mumbai	1A	20 25
3231	Mumbai	Mumbai	1A	20 25
3243	Mumbai	Mumbai	1A	20 25
3255	Mumbai	Mumbai	1A	20 25
3267	Mumbai	Mumbai	1A	20 25
3279	Mumbai	Mumbai	1A	20 25
3291	Mumbai	Mumbai	1A	20 25
3303	Mumbai	Mumbai	1A	20 25
3315	Mumbai	Mumbai	1A	20 25
3327	Mumbai	Mumbai	1A	20 25
3339	Mumbai	Mumbai	1A	20 25
3351	Mumbai	Mumbai	1A	20 25
3363	Mumbai	Mumbai	1A	20 25
3375	Mumbai	Mumbai	1A	20 25
3387	Mumbai	Mumbai	1A	20 25
3399	Mumbai	Mumbai	1A	20 25
3411	Mumbai	Mumbai	1A	20 25
3423	Mumbai	Mumbai	1A	20 25
3435	Mumbai	Mumbai	1A	20 25
3447	Mumbai	Mumbai	1A	20 25
3459	Mumbai	Mumbai	1A	20 25
3471	Mumbai	Mumbai	1A	20 25
3483	Mumbai	Mumbai	1A	20 25
3495	Mumbai	Mumbai	1A	20 25

2000  
Mulgi Shikli Pragati Jhali  
by Sumitro Basak

**Director, Actor,  
Singer, Fighter :**

आदर्श टी स्टॉल,  
स्टेशन रोड,  
रात को ८ वजे  
के बाद

**Mucchi, Bal ka  
Wig aur Tabla  
Topi ke liye :**

कल्लू मास्टर कि  
टैलरिंग शाप,  
रिक्शा स्टैन्ड  
के बाजू में



**Editing, Dubbing,  
Music ke liye :**

नोशाद अली,  
क्राउन मिल  
के ऊपर,  
टोपीवाला लेन



**KHANDESH KI APNI NAGARI  
APNA NAZARIYA  
MALEGAON  
KA CINEMA**

फिल्मों के वी. सी डी. मिलेंगे:  
स्टेट बस अड्डा की कैन्टीन

**Happy  
Millennium 2000**

**Malegaon ka Sholey,  
Malegaon ka Superman, Khandesh ki Baraat  
Koi Hil Gaya, Chicha Ka Hotel  
Janiya ka kaam- Traffic Jaam**

2000

Malegaon Cinema  
by Vivan Sundaram

*Designed by Rakesh Koyande*



2000  
Passion Fruit  
by Ranbir Kaleka



ELECTRONIC EQUIPMENTS

ACCOMMODATION AVAILABLE

FOR SALE



બેરક

COMMERCIAL

BUILDING MATERIALS

INTERNATIONAL BARS GRILLS



Ph: 9399085799

EARTH ACQUIRER



# TIMBER CITY FOR SALE



LEASE/RENT

AVAILABLE on Company lease/rent 1 to 5bhk flat, tuement, bungalow furnished / semi-furnished in Alkapuri, Wasmapura, Sama, Fatehpur, Karalibaug & all prime location throughout Baroda. Contact Rakesh Parekh (Rental) 9825055888

AVAILABLE on Company lease/rent 1 to 5bhk flat, tuement, bungalow furnished / semi-furnished in Alkapuri, Wasmapura, Sama, Fatehpur, Karalibaug & all prime location throughout Baroda. Contact Rakesh Parekh (Rental) 9825055888

બાકમ

Rental of Residential Commercial Properties Helpline on 9825055888 info@rentalhelpline.in

SURAYA Rental Properties

OFFICES	RESIDENTIAL RENT
800 to 2,00,000 Sq.Ft	800 to 1,50,000 Sq.Ft
COMMERCIAL PROPERTIES	LAND AGRICULTURE INDUSTRIAL RESIDENTIAL COMMERCIAL
Surash Solanki 9399085799	

ગુજરાત માર્શીસ મેન્યુફેક્ચરર્સ લિમિટેડ



2000 City for Sale by Gulammohammed Sheikh